



RISE SYMPOSIUM

**PROCEEDINGS
OF THE RISE
SYMPOSIUM**

TABLE OF CONTENTS



2

Message

3

Dedication

4

Overview

5

Research Submissions:

56

Internship Submissions

89

Faculty/Staff Mentors

94

Special Acknowledgments

97

About Converse

ABOUT THE COVER

The cover photo was submitted by Terra Pettit-Bacovin and selected by a team of judges. Terra is a member of the Class of 2022 and is currently pursuing a degree in chemistry. Her photo features Converse's bronze sculpture of Maria Mitchell, a famous American scientist of the 19th century, by renowned sculptor Elliot Offner.

RIGHTS STATEMENT: Abstracts published in The Proceedings of RISE Symposium are the property of the individual contributors and may not be reprinted, reformatted, repurposed or duplicated, without the contributor's consent.

MESSAGE FROM RESEARCH AND ENGAGEMENT

It is my pleasure to welcome you to the RISE (**R**esearch, **I**nternship, and **A**rt**S** **E**xperiential Learning) Symposium 2022. Engaging students in authentic experiences to enhance learning is a core educational value at Converse. Every year, nearly 100 Valkyries complete a research project or internship and many others produce a scholarly or creative work. With this first RISE Symposium, we hope to establish an annual platform that recognizes and celebrates the scholarly activities and achievements of Converse students across all disciplines.

Henry Ford once said: "Coming together is a beginning. Keeping together is progress. Working together is success." What a great quote for our inaugural RISE Symposium! The opening of the Office of Research and Engagement and the RISE Symposium brings together a new vision for enhanced scholarly and creative activity at Converse. Faculty and staff are eager to work with our students and the Office of Research and Engagement will continue to provide them with new opportunities and future success.

The RISE Symposium would not be possible without the contributions of many Converse faculty and staff, including the co-PIs of the 2020 Creativity, Community, and Cultural Enrichment Grant who envisioned this annual event. We are grateful for the support and tireless contributions of the judges, faculty and staff mentors, and the RISE Symposium organizers for making this opportunity a success. And of course, a special thanks goes to the student presenters for their scholarly and creative excellence. You are the stars of this event!

Together, WE WILL RISE!



H. Neval Ertürk, Ph.D.
Associate Provost for Research and Engagement
Professor of Biology



DEDICATION TO DR. JEFFREY H. BARKER

The 2022 RISE Symposium is dedicated to Dr. Jeff Barker, the quintessential teacher, an accomplished researcher, and a well-respected Provost. In 2021, Dr. Barker postponed a much-desired shift from administration to full-time faculty in order to serve as President of Converse; demonstrating once again his overwhelming commitment to the university and its mission. Tragically, Dr. Barker passed away far too soon on July 21, 2021.

Dr. Barker strongly believed that scholarly and creative experiences complemented and enhanced the classroom experience and provided students with key skills for further education and future careers. He was a champion of faculty-mentored scholarly activity for undergraduate students. Despite his demanding role as a senior administrator, he

mentored students in research and greatly enjoyed this experience. He also worked closely with faculty members to promote scholarly and creative activity among students. During his 20 years at Converse, his commitment to and passion for experiential learning motivated hundreds—if not thousands—of students to participate in research, internships, and scholarly and creative activities. He supported the establishment of the Office of Research and Engagement and the RISE Symposium at Converse. If he was with us today, Dr. Barker would have visited every presenter and personally interacted with them.

Today we honor Dr. Barker's memory by acknowledging his dedication and his lasting legacy to the Converse community.

Converse's 11th President, Dr. Jeffrey H. Barker passed away on July 21, 2021. Prior to becoming President, Dr. Barker had most recently served as Converse's Provost. Over his 20 years of service to Converse, Dr. Barker's long list of accomplishments centered around the advancement and well-being of the students and faculty.



RISE SYMPOSIUM OVERVIEW



The annual RISE (**R**esearch, **I**nternship, **A**rt**S** and **E**xperiential Learning) symposium aims to celebrate student scholarly activities and achievements across all areas of study at Converse University – including the arts, humanities, education, natural and mathematical sciences and social and behavioral sciences.

Open to all undergraduates, graduates and Converse II students, the RISE symposium empowers students to share their ideas, discoveries and artistic work with our campus and local community within a professional setting.

RESEARCH & SCHOLARLY SUBMISSIONS: **RESEARCH**



ARE LEADERSHIP AND PATIENT CARE LINKED?

Author: Dotan Shvorin; School of Education & Graduate Studies; Doctorate in Professional Leadership (EdD)

Faculty Advisor: Dr. Jeffery Martin; Assistant Professor in the Professional Leadership Program

Industry Partner: Mr. Roger Williams; Executive Director of Spartanburg Area Mental Health Center

Background: While the answer is intuitive, the specifics convey various perspectives. Health care organizations Leadership development is backed up by traditional impediments. Leadership competency is not required for clinical practitioners. Medical schools do not invest in leadership development as a proficiency requirement for future generations.

Introduction: Leadership delivers a critical influence on patient care. Leadership defines the relationship between a patient and the care provider, the relationship between health care professionals, and the structure and function of a health care organization. Each individual within a Health Care organization receives and transmits leadership values and meaning through human interaction. Yet, it is not clear how to engage with Leadership Development in Health Care organizations to improve patient care.

Objectives: The purpose of this study is to identify, classify, and comprehend the linkage between Leadership and patient care.

Methods: The study was situated through a collaboration between Converse University and Spartanburg Area Mental Health Center (SAMHC). The framework incorporates experience and learning within the study design. First, a scholarly immersion within SAMHC was devoted to developing a conceptual understanding of the mental health organization's executive, supervisory, and therapeutic aspects that address Spartanburg's young and adult patient populations. Second, a collaboration with Professional Leadership doctoral students and Health Care leaders established diagnostic tools to identify and classify behavioral leadership tendencies. Third, the linkages between behavioral leadership tendencies, organizational structure, and culture were modeled. Finally, the leadership diagnostic tools and models will be applied to improve patient care at the Spartanburg Area Mental Health Center.

RESEARCH

Results: A literature review created a logical construct for Leadership gaps within Health Care and the rationale behind the study motivation. The diagnostic tools demonstrate findings with statistical significance that can inform on legitimate Leadership behavioral tendencies. The linkages model shows validity and reliability indications. Finally, applying the Leadership diagnostic tool and the linkages model with SAMHC initiated a Leadership development process that led to establishing a new committee to determine the impact of operational policies and mandates on patient care.

Conclusions: Leadership is linked to patient care. The study explains how Leadership is transmitted through the organization's hierarchy and expressed within each patient interaction. The potential application of this study can be broadened to different establishments and add to the pragmatic role of organizational Leadership within the professional workforce and academic literature.

DOTAN SHVORIN

Dotan Shvorin is a student within the Professional Leadership Program at Converse University. His dissertation work focuses on deepening his knowledge and experience, looking at the linkage between Leadership and patient care. His work includes a collaborative effort with Spartanburg Area Mental Health Center's executive director, executive team, and supervisors. Leading up to his doctoral degree, Dotan spent two years in Greenville Memorial Hospital as a graduate researcher working with the Department of Emergency Medicine. During his hands-on experience at the hospital, Dotan was involved with scholarly work and immersive learning to understand Health Care organizations, especially when considering a level one trauma hospital setting. In addition, Dotan's educational background includes degrees in industrial engineering and management. Dotan's interests are in medicine, health care, and human performance. Dotan's hobbies include triathlon training, tennis, and playing the guitar. Dotan and his wife have two boys, and he appreciates every family moment, especially in the current environment.



TEACHERS' PERCEPTIONS OF BLACK MALE PROTAGONISTS' INFLUENCE ON BLACK MALES' READING DEVELOPMENT

Author: Sherrie L. Jeffries; School of Education & Graduate Studies; Doctorate in Professional Leadership (EdD)

Faculty Advisor: Dr. Jeffery Martin; Assistant Professor in the Professional Leadership Program

This phenomenological study examined 11 Title 1 early childhood educators' perceptions of Black male students' reading development related to the availability and representation of Black male protagonists in classroom library picture books in upstate South Carolina.

From the perspective of reading coaches, kindergarten teachers, and first-grade teachers, this study explored classroom library accessions procedures and how the procedures affect the availability and representation of Black male protagonists in classroom library picture books. Additionally, the study explored each educator's perception of the effects of the Black male protagonists on the reading development of their current Black male students. Data analyzed from the study revealed these findings:

- Funding for classroom libraries is inadequate.
- Inequalities in funding lead to inequalities in classroom library collection sizes.
- The portrayal of Black males in picture books in the study population is mostly positive.
- Black male protagonist books are largely missing from classroom libraries.
- Book use affects teachers' perceptions of connections between Black male protagonists and their Black male students' reading development.
- Observations of Black male students' behaviors during read-alouds of Black male protagonist books determine teachers' perceptions of relationships between the books and students' reading development.
- Classroom libraries need more Black male protagonists.

RESEARCH

Recommendations include (a) establishing a dedicated funding stream for classroom library accessions, (b) inventorying all classroom libraries to determine the availability and representation of Black male protagonists, (c) including reading coaches in the procurement process, (d) commissioning reading coaches to compile a district list of appropriate mirror texts for Black male students, (e) allowing reading coaches to lead professional development about the benefits of mirror texts on Black males' reading development, (f) educating teachers on the necessity and benefits of reading aloud and discussing Black male protagonist books in a whole-class setting, (g) informing teachers of the text characteristics necessary for Black male students to remain engaged, and (h) starting a book club to begin a discourse on Black males' reading development and the instructional changes that would benefit Black male students.

Keywords: Mirror books, Black males' reading development, classroom libraries

SHERRIE L. JEFFRIES

I am a candidate for the degree Doctorate of Education in Professional Leadership and expect to graduate May 21, 2022. I am from Jonesville, SC and I am currently a first-grade Reading Interventionist and Reading Recovery teacher at Mary H. Wright Elementary School in Spartanburg School District 7. I received by BA in Elementary Education and a MA in Reading/Literacy from Furman University. I am the CoFounder of SPARK (Students and Parents Advancing Reading Knowledge), teaching African American families strategies to energize and strengthen family literacy time while introducing them to high-quality African American children's books



THE HIDDEN AND FORGOTTEN: THE EXPERIENCES OF WOMEN WITH MENTAL ILLNESS LIVING IN 19TH CENTURY SOUTH CAROLINA

Author: Sierra R. Feser; School of Humanities, Sciences & Business, History

Faculty Advisor: Dr. Angela Elder; Associate Professor of History

A woman by the name of Jane Moody would be placed in the care of the South Carolina Lunatic Asylum in June of 1883[1]. She would write to her brother in August of 1884, “I have not heard from any of you this year. What has become of you all or have you all forgotten me. It looks as if you had... I suppose if you all will not let me return home, I will have to stay here. It is very hard for me...” Moody’s experience in the Lunatic Asylum was unfortunately not unique. Many women would be abandoned by their families at the asylum, yearning to return home. Despite this, their families would not even offer the simplest of gestures as to send a letter to check in on them. For many women, the Lunatic Asylum was not a place where they stayed only to get better, but a prison in which they were confined, deprived of the normal life they once knew.

From the early 1800s until the early 1900s, mental illness amongst men and women in South Carolina occurred at similar rates. Unfortunately, few accounts of South Carolinian women who had experienced mental illness survive. Those that do are overshadowed by the practitioners’ files and notes, most of whom were male, and the stories of men with mental illness. The stories of women who suffered from mental illness before the South Carolina Lunatic Asylum were few and far between, but files from the Asylum help to create a picture of the lives of these women. By reviewing the correspondence and files, and analyzing the reports of psychiatric doctors for gender and racial biases, this paper will reveal the hidden and forgotten stories of the mentally ill women living in South Carolina.

[1] Admission and Discharge Record, November 1882-October 1891, SC State Hospital, South Carolina Department of Archives and History.

RESEARCH

SIERRA R. FESER

I am a history major and secondary education minor. I have a passion for learning and teaching history. After I graduate this fall, I hope to go on to graduate school and eventually receive my PhD in History.



A WOMAN'S INFLUENCE: FRANCE, ENGLAND, AND KING ARTHUR'S COURT

Author: Edith M. Hutcheson; School of Humanities, Sciences & Business; History

Faculty Advisor: Dr. Angela Elder; Associate Professor of History

Adulterous love between a knight and a noblewoman, the anguished longing of the male lover, and power put directly into the hands of the woman, now placed at the top of the social hierarchy—what we recognize today as courtly love—appeared in the latter half of the twelfth century amidst an explosion of literary compositional activity that piloted the introduction of both the French *romanz* (Romance) and Arthurian legend into the courts of England.

Although explicitly fictional in nature, twelfth-century literature often implicitly embodies threads of reality--thus establishing its vital importance. In that brief but extraordinary moment in history, various waves of Continental French-speakers immigrated to England and a completely new aristocracy emerged—a truly bilingual elite. Written in the vernacular rather than Latin, by new and diverse voices not belonging to the traditional *litterati*, this literature allowed for another perspective to emerge through the lines of the page.

Marie de France was one of these authors, and she possessed an understanding of the ways that literature mediates between individual and society--but she took it even further: she integrated the feminine reality into a world dominated by masculinity. She bravely embarked on her laborious journey of writing as a lone woman in a sea full of male courtiers and by doing so, she restored a voice that had been lost—nonexisting within the heroic epics of her feudal age. She gave a voice to the individual, and she gave a voice to women.

RESEARCH

EDITH M. HUTCHESON

My name is Edith (or Edy), and I am currently a senior at Converse, set to graduate this May with a Bachelor of Arts in History and a minor in English. I'm from Inman, South Carolina and have resided here all my life. I plan to continue my education in graduate studies, and while I currently have no idea where that may take me, I do know that I intend to eventually pursue a PhD. Someday, I hope to become a professor of history.



DYNAMIC PROCESS MODELING OF THE LOGICAL ANTECEDENTS AND MODERATORS OF INTER-ORGANIZATIONAL COLLABORATION AND THE ROLE OF TRUST

Author: Peter de KAM; School of Education & Graduate Studies; Doctorate in Professional Leadership (EdD)

Faculty Advisor: Dr. Jeffery Martin; Assistant Professor in the Professional Leadership Program

Inter-organizational collaboration is a standard business strategy, with more than 10,000 partnerships created each year in the United States to gain access to markets and/or expertise. However, many organizations have real problems creating a mutually beneficial chain of value.

As a result, nearly half of all strategic alliances fail to meet expectations. This research reviews previous research on inter-organizational collaboration and generates new data from a series of narrative questionnaires, interviews, and semi-quantitative cognitive modeling sessions based on testable reusable units of cognition (TRUCs). Individual fuzzy cognitive models were developed then aggregated into a common mental model and analyzed using the Mental Modeler analytical engine based on graph theory. A phenomenological methodology was then employed to examine the lived experiences of study participants. The strength of this approach was its ability to create structured knowledge.

Subsequently, the following findings emerged from this study: (1) Interpersonal trust is the definitive key to making inter-organizational collaboration work. More importantly, there is no such thing as just a little bit of trust. Either there is trust, or there is not; (2) Interpersonal trust is the product of repeated interactions of making and delivering on commitments within a given governance structure; (3) Product ownership and the resultant mutual accountability of a shared purpose and goals may be the hallmark of collaboration; and (4) Psychological safety has a distinctive role in enabling collaborative performance, particularly when there is uncertainty and a need to develop innovative solutions within and across organizational boundaries. It is also an essential component of organizational learning and how knowledge is created and used in new ways to solve problems or overcome internal and external inertia.

PETER DE KAM

Peter de KAM is a Doctoral Candidate in the Converse Professional Leadership EdD program. His dissertation was completed in the Fall of 2021 under the tutelage of Dr. Jeff Martin on the Dynamic Process Modeling of the Logical Antecedents and Moderators of Inter-Organizational Collaboration and the Role of Trust. After graduating, Peter will start his third career with The Center for Creative Leadership.



THE REMOVAL OF COBALT (II) AQUEOUS IONS VIA HYDROGEL FORMATION OF SODIUM ALGinate IN SYNTHETIC WATERS OF VARYING HARDNESSES

Author: Paige N. Smith; School of Humanities, Sciences & Business; Chemistry

Faculty Advisor: Dr. Jennifer Hawk; Associate Professor of Chemistry

Heavy metal contamination in water sources is a serious problem for many places around the world. Heavy metals most commonly enter water systems through urban runoff, industrial runoff, accidents, and volcanic activity. This contamination can pose a threat to both aquatic and human life. Increased levels of cobalt in humans can lead to cardiovascular issues like cardiomyopathy, cardiogenic shock and enlarged hearts; extended exposure can also cause gastrointestinal issues such as nausea and vomiting. In previous studies, sodium alginate, a biological polymer that is derived from brown algae, was shown to form crosslinks with cobalt(II) ions to form hydrogels. These hydrogels were removed from the solution and decreased the amount of cobalt(II) in the water samples by an average of 23.03%. The goal of this study was to test this method's effectiveness in the presence of other aqueous metal ions. To do this, six different synthetic water samples with varying levels of hardness were tested to see if hydrogels would form. Atomic Absorption Spectroscopy (AAS) was used to determine the concentrations of calcium, magnesium and cobalt ions present in each water sample at three different points in the process: 1) before the addition of the cobalt(II) chloride salt, 2) after the addition of the cobalt(II) chloride salt, and 3) after the addition of sodium alginate and the removal of the hydrogels. It was discovered that hydrogels formed in all six water samples and upon removal decreased the concentration of cobalt(II). A range of 3.52% - 16.9% of cobalt(II) ions were able to be removed from the solutions of varying hardnesses. It was observed that the synthetic waters with higher hardnesses resulted in a smaller percentage of cobalt(II) removal when compared to synthetic waters with lower hardnesses.

RESEARCH

PAIGE N. SMITH

Paige is a senior chemistry major from Upper Deerfield, New Jersey. She is a member of the nationally ranked acrobatics and tumbling team as well as a member of SAAC and The Honor Board. After graduation, Paige plans to begin working.



THE INFLUENCE OF THE INDUCTION PROGRAM ON NOVICE TEACHER RETENTION

Author: Melissa Kate W. Colwell; School of Education & Graduate Studies,
Doctorate in Professional Leadership (EdD)

Faculty Advisor: Dr. R. Lee Givins, Jr.; Assistant Professor of Education

The purpose of the quantitative, descriptive, correlational study was to determine the influence of the first-year teacher induction program on the retention of teachers within the first five years of their careers. The study was conducted by surveying 70 teachers from elementary, middle, and high schools in a large school district in the upstate of South Carolina. The data analysis consisted of descriptive statistics and correlational statistics obtained from Pearson's r tests. The correlational tests were used to determine the level of influence between the independent variables of the district's novice teacher induction program and the dependent variable of teacher retention within the first five years. The results of the study indicate there is some influence among the district-level induction programming, the school-level mentor guidance, and the school-level principal support and novice teacher retention.

MELISSA KATE W. COLWELL

After obtaining my EdD in Professional Leadership in May 2022, I plan to continue my teaching career at Dorman High School. I am from Boiling Springs, SC and currently live and teach in Roebuck, SC



EFFECTS OF *CORDYCEPS MILITARIS* AND *CORDYCEPS SINENSIS* ON THE VIABILITY AND MIGRATION OF CANCEROUS VS. NON-CANCEROUS KERATINOCYTES

Authors: Meagan B. Waters, School of Humanities, Sciences & Business; Biochemistry and Psychology
Haley M. Nitz; School of Humanities, Sciences & Business; Biochemistry and German

Faculty Advisor: Dr. Neval Ertürk; Professor of Biology and Associate Provost for Research and Engagement

Entomopathogen *Ophiocordyceps sinensis* (syn. *Cordyceps sinensis*; *CS*) is a highly prized traditional medicine used to treat cancer, respiratory disorders, dizziness, liver disorders, and anemia in much of South East Asia. Because of high demand in 2009 its financial value reached to \$12,500 per kg for high-quality harvest. Because *CS* is difficult to culture, it must be harvested from its natural environment. This caused its being over harvested in the nature.

Ophiocordyceps militaris (syn. *Cordyceps militaris*; *CM*) is another entomopathogen that can be easily cultivated. Because its chemical properties is similar to the chemical properties of *CS* in recent years its properties have been compared to the therapeutic properties of *CS*. In recent years our lab showed that *CS* affects cell viability in cancerous human keratinocytes, additionally, rats treated with *CS* showed changes to the expression of genes that have a role in cell migration. In this study, we investigated the effects of *CS* and *CM* on cell migration and compared their anti-proliferative effects on cancerous and non-cancerous human keratinocytes. To measure the effects on cell viability we treated A431 and HaCaT cells with varying doses (0.01, 0.05, 0.1, 0.5, and 1.0 mg/mL) of *CS* and *CM* over a four-day period. Our results showed that *CM* had no effect on cell viability for either cell line after 24- hour treatment period. Notably, *CS* caused a decrease in the cell viability of cancerous A431 cells, but not on non-cancerous HaCaT cells. When analyzing the effects of the treatments of cell migration, *CS* had a higher inhibition for the cancerous A431 cells than the non-cancerous HaCaT cells. This finding shows that *CS* might prevent the migration of cancerous cells.

This mechanism of inhibition could prevent the metastasis of cancerous cells, while simultaneously not inhibiting the process of wound healing in non-cancerous cells. These results proved to be promising as a potential cancer therapeutic agent. We recommend further research to identify the cellular mechanisms and the specific compounds involved in cell migration and cytotoxic effects of *CS*. We also conclude that *CM* is not comparable to *CS* in terms of its selective effect on cell migration and cytotoxicity on cancerous cells.

RESEARCH

MEAGAN WATERS

I am a senior at Converse University. I am a Biochemistry and Psychology double major. I am originally from Boston, MA and now live in Spartanburg, SC with my family. My academic interests include neurochemistry, psychopharmacology, and general biochemistry principles. My hobbies include oil painting, reading, and listening to music. Having the opportunity to learn and develop as a researcher under the guidance of my mentors has been my greatest accomplishment whilst being a student at Converse. After Converse, I plan to attend a graduate program to earn my PharmD and PhD, and later pursue an MD. I ultimately hope to stretch my desire to discover into the research aspect of my field, and elevate treatment opportunities and outcomes.



HALEY NITZ

I am a senior at Converse University. I am a Biochemistry and German Studies double major. I am originally from Jacksonville, FL but I now live in Spartanburg, SC with my family. My hobbies include playing violin, listening to music, and reading. My greatest accomplishments at Converse are being a part of amazing research teams with my mentors and being able to expand my laboratory skills. After Converse I plan to attend graduate school for pharmacy to earn my PharmD as well as my PhD. My goal is to eventually specialize in pharmacology and work alongside pharmaceutical companies to research new medications.



HOW NEOLIBERAL CAPITALISM HAS IMPACTED THE UNITED STATES' ABILITY TO BE A REPRESENTATIVE DEMOCRACY

Author: Hannah C. Norton; School of Humanities, Sciences, and Business; Politics

Faculty Advisor: Dr. John Theilmann; Professor of History and Politics

During the Cold War, there was a rise in neoliberal policymaking that focused largely on market-based analysis. This followed a period of the repression of liberal ideology beginning during World War II, in which government intervention in the economy and social issues became unpopular. As the United States has experienced the ramifications of neoliberal policies, there seems to be a new approach on the horizon, indicating the importance of analyzing the influence of neoliberalism on American citizens and their interactions with democracy. By utilizing Amartya Sen's Capabilities Approach and the themes of justice and freedom in his book *Development as Freedom*, this paper examines the effects of neoliberal policy on the ability of Americans and their representatives to vote according to their values and goals. The emphasis on these market-based solutions led to union-busting, inequity in higher education, and food insecurity; overall limiting the political freedom of citizens to conduct their own reasoned scrutiny. With these negative implications of neoliberalism in mind, it is then revealed that these policies have made for a populace that cannot engage fully with democracy due to a lack of a proper distinction between economic need and other equally important needs and preferences in civic decision making. As the United States seeks a renewed approach to policy and civic engagement, it will be crucial to encourage public reasoning, self-scrutiny, and goal-making that revolves around maintaining representative democracy.

References

Cahalan, M. W., Addison, M., Brunt, N., Patel, P. R., & Perna, L. W. (2021). Indicators of Higher Education Equity in the United States: 2021 Historical Trend Report. *Pell institute for the study of opportunity in higher education*.

Clapp, J., & Moseley, W. G. (2020). This food crisis is different: COVID-19 and the fragility of the neoliberal food security order, *The Journal of Peasant Studies*, DOI: 10.1080/03066150.2020.1823838

Jones, D. S., & Jackson, B. (2016). The Neoclassical Counter-Revolution and the Ascendancy of Business. In *Who Runs the Economy?* (pp. 73-84). Palgrave Macmillan, London.

Sen, A. K. (1979). Equality of what? *The Tanner lecture on human values*, 1, 1-26.

Sen, A. K. (1999). *Development as freedom*. Alfred A. Knopf, Inc.

Sen, A. K. (2009). *The idea of justice*. Harvard University Press.

HANNAH C. NORTON

Hannah Norton is a senior majoring in Politics with a minor in Arts Administration. She is from Pacolet, South Carolina. After graduation, she plans to attend graduate school. This research paper was completed in the Fall of 2021 under the supervision of the Dr. John Theilmann.



IMPACT OF HOSPITAL SIZE AND CEO GENDER ON PATIENT SATISFACTION AT ACUTE CARE HOSPITALS

Author: Dorothy L. Williams; School of Education & Graduate Studies;
Doctorate in Professional Leadership (EdD)

Faculty Advisor: Dr. R. Lee Givins, Jr.; Assistant Professor of Education

Patient satisfaction is a critical part of the quality process at acute care hospitals. The objective of this study was to examine the association between Chief Executive Officer (CEO) gender and Hospital Consumer Assessment of Healthcare Providers and Systems (HCAHPS) scores, specifically patient satisfaction, and examine whether the relationship varies based on hospital size. The study contributes to eliminating the gap of knowledge of healthcare leaders in the United States about the effect of CEO gender or hospital size on acute care hospitals with high or low patient satisfaction rates. A systematic review was conducted to test the hypothesis of a relationship between patient satisfaction rates and the CEO gender and hospital size in acute care hospitals. The study included an analysis of publicly reported information, a comprehensive analysis of journals, dissertations, and other accessible literature. The results suggest no distinct differences in patient satisfaction between female and male CEOs at acute care hospitals, and yet, there are far fewer female CEOs than males. The size of the hospital revealed smaller hospitals score significantly higher than medium and large hospitals in patient satisfaction scores. On this basis, hospitals should acknowledge and prioritize key areas for organizational success and sustainability, including leadership gender, patient population, and what makes up the patient experience survey.

Keywords: Patient satisfaction, CEO gender, hospital size, glass ceiling

DOROTHY L. WILLIAMS

I am married with two boys and work as a data quality analyst with Spartanburg Regional Healthcare System. My major is Professional Leadership in the EdD program. I plan to utilize my leadership skills in my current work field after graduation in May 2022.



MECHANISTIC MODELING OF COVID-19 DATA WITH REGIONAL APPLICATIONS

Author: Danielle C. Griffin; School of Humanities, Sciences, and Business; Mathematics and Biology

Faculty Advisor: Dr. Amanda Mangum; Assistant Professor of Math

Epidemic mechanistic models are governed by biological principles of disease spread. Common mechanistic models include Susceptible-Infected-Removed (SIR) and Susceptible-Exposed-Infected-Removed (SEIR) models. These models are composed of systems of differential equations. We analyze and compare the application of mechanistic models on Spartanburg County, South Carolina positive-test counts, hospitalization, death, and vaccination data. We fit parameters to experimental data using the MATLAB `fmincon` function and solved the systems of differential equations using ODE45. We compared the SIR, SEIR, and Susceptible-Vaccinated-Infected-Recovered-Deceased (SVIRD) models. We found that the SVIRD model best fit the experimental data due to its incorporation of time-dependent parameters. It also incorporates a level of caution factor in response to increased infection in the population and a sense of safety factor for increased vaccinations which gives insight into the changing social response toward the pandemic within Spartanburg County.

DANIELLE C. GRIFFIN

I am a math and biology double major in the class of 2022 planning to enter an applied mathematics Ph.D. program in the fall. My hometown is Kershaw, South Carolina. I recently completed an Oak Ridge National Lab internship in the Computer Science and Mathematics Division where we developed implicit operator-splitting schemes for stiff differential equations. Essentially, we aimed to create accurate and efficient simulation methods for systems with fast dynamics. Now, I am working on an honors thesis exploring the application of deterministic models on local COVID-19 data. While I am open to many areas of mathematics, I am particularly interested in numerical analysis, mathematical biology, and applied partial differential equations.



THE EFFECT OF ALCOHOL ON STARTLE RESPONSE IN ORANGE HEAD COCKROACHES

Authors: Rebecca R. Avakian; School of Humanities, Sciences, and Business; Psychology and English
Katie M. Edge, School of Humanities, Sciences & Business; Psychology
Hayley F. Disco, School of Humanities, Sciences & Business; Psychology

Faculty Advisor: Dr. Christopher A. Varnon; Assistant Professor of Psychology

This poster describes research on the orange head cockroach (*Eublabeus posticus*) as a model organism for behavioral and biological research. While many invertebrate models are available, cockroaches have several benefits over other species that show impressive behavioral abilities, such as bees. Most notably, cockroaches are generalists that can be maintained in controlled laboratory conditions year-round, while bees are highly specialized, and many species must be kept outdoors. We believe the generalist nature of cockroaches may facilitate the development of robust procedures. Prior work from our laboratory has shown that our model species, the orange head cockroach, will voluntarily consume alcohol, will startle to changes in lighting, will habituate to repeated light-startles, and will learn to associate odors with food. In the present experiment, we investigated the impact of alcohol intoxication on a light-startle response.

Subjects ($n = 91$) were randomly assigned to one of five groups: control, chilled, 0% alcohol, 5% alcohol, 10% alcohol, 20% alcohol, or 40% alcohol. Subjects in the control group were collected, placed in a vial for 15 minutes before being sexed, weighed, and placed in the apparatus in preparation for experimental trials. The chilled group was treated the same as the control group except they were placed in an ice bath for 15 minutes before being sexed and weighed. The 0% ethanol group was treated the same as the chilled except they were injected with 10 microliters of ringer's solution after being sexed and weighed. The 5%, 10%, 20%, and 40% ethanol groups were treated like the 0% groups except they were injected with 10 microliters of their respective ethanol solution. Subjects then participated in 11 startle trials after a 1-hour acclimation. Each trial was separated by 30 minutes. During each trial, we recorded each subjects' duration of startle in response to a 10-second flash of light.

RESEARCH

We found that the control group startled less over time, as was expected from previous research. This effect was not present in any other group, likely due to the chilling procedure. Alcohol appeared to reduce the startle behavior, but the data suggests a nonlinear dose response curve. We also recorded subject mortality for 10 days after the experiment and found 83% of subjects survived. We hope our findings inform the use of insects as models for important behavioral and biological topics, such as alcoholism.

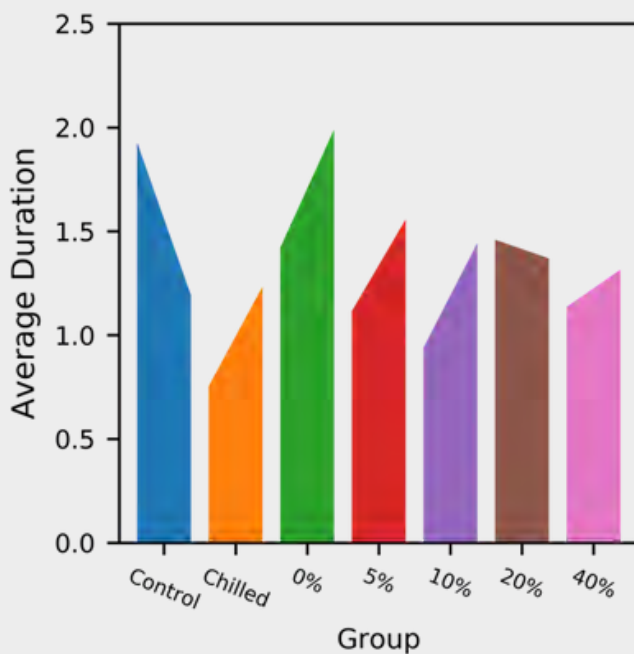


Figure 1 shows a condensed version of our results. Each bar displays the average startle duration across the experimental trials for each group. The first point of each bar corresponds to the average response duration for the first half of trials, while the second point of each bar corresponds to the average response duration for the second half of trials. Comparisons can be made of both the overall startle duration, as well as the slopes for each group.

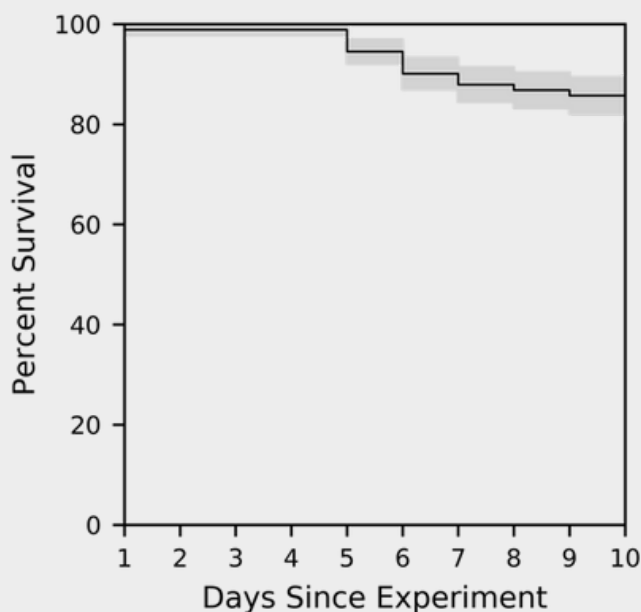


Figure 2 shows the overall survival of subjects for ten days after the experiment was complete.

RESEARCH

REBECCA R. AVAKIAN

Rebecca Avakian is a senior majoring in Psychology and English with Creative Writing. She is from Boiling Springs, SC. After graduation, she plans to find a job in publishing as a editor. This internship was completed in the Summer 2021 under the supervision of Dr. Varnon.



EXPOSURE TO SUBLETHAL CONCENTRATIONS OF GLYPHOSATE, 2,4-D, AND THEIR COMBINED FORMULATION INDUCES OXIDATIVE STRESS IN *EISENIA FETIDA*

Authors: Mary Owens Davidson; School of Humanities, Sciences, and Business; Biology
Kaitlin Brown; School of Humanities, Sciences, and Business; Biology
Heena Patel; School of Humanities, Sciences, and Business; Biology

Faculty Advisor: Dr. Edna Steele; Professor of Biology

Glyphosate and 2,4 dichlorophenoxyacetic acid (2,4-D) are two of the most effective and widely used herbicides in the world. Their combined formulation is found to be more effective in killing tough weeds and has been applied to genetically modified resistant crops globally to maximize production. Environmental pollutants such as herbicides can activate production of excess reactive oxygen species (ROS) in various organisms causing oxidative stress. To assess possible levels of oxidative stress, adult earthworms (*Eisenia fetida*) were exposed to artificial soil treated with sublethal concentrations of these herbicides for 28 days. Samples were collected every 7 days and the antioxidant enzyme activities of superoxide dismutase (SOD) and catalase (CAT), and the amounts of malondialdehyde (MDA) and reduced glutathione (GSH) were measured and analyzed to determine if the oxidative stress was induced significantly by these herbicides. Compared with the control, the results of the SOD analysis initially showed Glyphosate and 2,4-D to be significantly different from the control. The CAT activity showed a significant increase in glyphosate and 2,4-D groups only at day 14 when compared to the control. The LPO analysis showed a significant increase in the MDA levels compared with the control, both initially, and across the days. Combo 1x and 3x also show some of these effects, to a lesser extent. It appears that it is the 2,4-D in the combination that is carrying this effect since glyphosate does not seem to affect LPO much. The overall results of this study show significant fluctuations in the levels of activities SOD and CAT activities as well as the MDA and GSH contents in earthworms compared to the controls which is indicative of oxidative stress as a result of exposure to sublethal levels of glyphosate, 2,4-D, and their combined formulation.



MARY OWENS DAVIDSON (LEFT)

I am a class of 2022 Biology major with minors in Environmental Studies, Philosophy, and Studio Art. I've lived in Spartanburg for 10 years, and when I was a high schooler, I participated in student research with Dr. Ertürk through the STARS program, which inspired me to continue to pursue research. I will complete my Honors Thesis this spring on herbicide-induced oxidative stress and the concept of significance in biological research. After graduation, I will pursue a masters degree in ocean science and become a marine conservationist.

HEENA PATEL (CENTER)

I am member of the class of 2023 with a major in Biology and minors in Chemistry and Philosophy. I plan on attending medical school after graduation and specialize as a Pediatrician. I currently tutor and work in the Admissions office on campus as well as volunteer at the hospital.

KAITLIN BROWN (RIGHT)

I am from Ridgeway, Virginia and a member of the class of 2023. I'm a junior Biology major with a chemistry minor and concentration on pre-medicine. My plans post graduation is to attend medical school. I am also on the Converse swimming team and I was captain for this season.

THE ROLE OF ADENOSINE SUBTYPE RECEPTORS ON TEMPORAL PERCEPTION

Authors: Meagan B. Waters, School of Humanities, Sciences & Business; Biochemistry and Psychology
Haley M. Nitz; School of Humanities, Sciences & Business; Biochemistry and German
Savannah B. Grigg; School of Humanities, Sciences & Business; Psychology
Anna Joe Powell; School of Humanities, Sciences & Business; Biology and Psychology

Faculty Advisor: Dr. Rich Keen, Professor of Psychology
Dr. Neval Ertürk, Professor of Biology and Associate Provost for Research and Engagement

Primary: Cognitive Neuroscience/ Physiological

Secondary: Comparative and Learning/Cognition

Caffeine's main effect on the brain is as an adenosine antagonist. Adenosine has four subtype receptors: A1, A2A, A2B, and A3 and affects a wide range of neuropsychiatric functions by primarily integrating with dopaminergic and glutamatergic neurotransmitter systems. Previously, our lab determined that caffeine speeds up temporal perception. However, the question remains as to which adenosine subtype receptors are involved in temporal perception. To answer this question, we first trained 81 rats to discriminate a short signal (< 4 s) or a long signal (> 4 s). Then the rats were assigned to one of five groups: Sham Control, A1, A2A, A2B, or A3. Over a three session period, rats were given an ip injection with the appropriate selective antagonist (or sham) 10 minutes before each session. A speeding up of temporal perception is observed if a bias emerged to choose the long lever more relative to three baseline sessions. It was found that the A2a group showed signs of a significant speeding up of temporal perception ($p=0.02$). All other groups had no significant difference in comparison to the control group. These results are consistent with the observation that A2A subtype receptors are co-localized with Dopamine (D2) subtype receptors. The D2 subtype receptors have also shown to have a strong influence on temporal perception.

RESEARCH

MEAGAN WATERS

I am a senior at Converse University. I am a Biochemistry and Psychology double major. I am originally from Boston, MA and now live in Spartanburg, SC with my family. My hobbies include oil painting, reading, and listening to music. Having the opportunity to learn and develop as a researcher under the guidance of my mentors has been my greatest accomplishment whilst being a student at Converse. After Converse, I plan to attend a graduate program to earn my PharmD and PhD, and later pursue an MD. I ultimately hope to stretch my desire to discover into the research aspect of my field, and elevate treatment opportunities and outcomes.



HALEY NITZ

I am a senior at Converse University. I am a Biochemistry and German Studies double major. I am originally from Jacksonville, FL but I now live in Spartanburg, SC with my family. My hobbies include playing violin, listening to music, and reading. My greatest accomplishments at Converse are being a part of amazing research teams with my mentors and being able to expand my laboratory skills. After Converse I plan to attend graduate school for pharmacy to earn my PharmD as well as my PhD. My goal is to eventually specialize in pharmacology and work alongside pharmaceutical companies to research new medications.



SAVANNAH GRIGG

I'm a psychology major and women's studies minor at Converse University. I'm from a smalltown in South Carolina called Campobello, about 20 minutes north of Spartanburg. My favorite hobby is reading and I also enjoy listening to crime podcasts. After graduation I hope to get a temporary job in the field of psychology while preparing to attend graduate school. I hope to eventually obtain a PhD in forensic psychology and participate in some form of victim advocacy, particularly for women and children.



ANNA JOE POWELL

I'm a fourth-year biology/psychology double major at Converse University and I'm interested in research and medicine. This was my first research experience, and I'm looking forward to doing more work in neuroscience-adjacent fields. I enjoy reading fiction and irritating my cats in my free time.



FERN AND LYCOPHYTE FLORA OF HOBCAW BARONY

Authors: Madelyn West; School of Humanities, Sciences & Business; Biology
Samantha Jaccard; School of Humanities, Sciences & Business, Biology

Faculty Advisor: Dr. Douglas P. Jensen; Associate Professor of Biology

Hobcaw Barony is a privately owned research reserve located on the Outer Coastal Plain of South Carolina near Georgetown. This 16,000-acre, species-rich expanse of land is home to a large number of diverse plant habitats including longleaf pine forests, tidal marshes and maritime forests. This reserve is a former rice plantation and hunting ground that is now devoted to ecological and oceanographic research. A large majority of its acreage has never been disturbed and is one of few remaining tracts of land in nearly original condition on the Waccamaw Neck. Although the flora of lycophytes and monilophytes of Hobcaw Barony has not been investigated in detail, we hypothesized that with its diverse habitat, it would be home to a large number of species. Our goal was to document the species of these plants that live on Hobcaw Barony.

Initially, we compiled a list of potential species that may be present at the site through digital searches of herbaria through the herbarium consortium SERNEC and the *Flora of the Southeastern United States*. During the summer of 2021, we visited Hobcaw Barony three times to document diversity and collect specimens. We collected multiple fertile specimens whenever possible. Smaller specimens were collected to the rhizome and larger plants were collected in fragments. All specimens were photographed then pressed and preliminarily identified while in the field. Collection notes for each species included habitat, location, and coordinates. The specimens were fully identified at Converse University using the *Flora of North America* and the *Flora of the Southeastern United States* as identification guides and following the taxonomy in the latter. Specimens were then labeled and mounted, and they are held in the Converse University Herbarium (CONV).

We documented a total of 17 species of monilophytes and one lycophyte species, slightly less than we had expected. Of the species we collected, *Osmundastrum cinnamomeum*, *Anchistea virginica*, and *Thelypteris palustris* were ubiquitous. We collected a single specimen of *Lygodium japonicum*, which is considered an invasive pest in some areas. We most likely missed several species because they are less common, because they are cryptic, or because we visited outside of their growing seasons. Because of this, we consider our list of monilophytes and lycophytes at Hobcaw Barony to be preliminary.

RESEARCH

MADelyn WEST

I am currently a Biology and Studio Art major at Converse University. I will be graduating in 2023 and I plan to become a scientific illustrator.



DOWNSTREAM FROM MYRTLE BEACH, AN ANALYSIS OF WATER QUALITY

Author: Terra C. Pettit-Bacovin; School of Humanities, Sciences & Business; Chemistry

Faculty Advisor: Dr. Sheri Strickland; Professor of Chemistry

Impaired water bodies have negative impacts on the health of dependent ecosystems. The downstream effects of human density in Myrtle Beach on the Waccamaw River and Winyah Bay may have long lasting consequences if left unaddressed. The recent Title 303(d) listings of several locations across Winyah Bay for various pollutants highlights the need for continuous evaluation of water quality. Samples from the Waccamaw River, and Winyah Bay with respect to the Hobcaw Barony Preserve were analyzed over the course of the summer. The physical and chemical parameters of water temperature, pH, dissolved oxygen, conductivity, and bacteria levels were evaluated for each sampling event as supplemental data. Changes in temperature and dissolved oxygen stood out in the final data set. Water temperatures increased by 23.8 % (from 25 °C to 31° C) over the summer months, and dissolved oxygen decreased by 40.3 % (from a site average of 5.08 ppm to 3.03 ppm). The primary parameter of interest was the concentration of total phosphorous in the samples. High phosphorous levels can correlate with the stimulation of unwanted microorganisms and cause imbalances in an ecosystem. Excess phosphorus in water bodies is typically associated with non-point sources such as livestock, pet waste, lawn fertilizers, urban development, and septic tanks. The Ascorbic Acid method and Malachite Green method were utilized in determining the concentration of phosphorus in water samples. Total phosphorus levels determined by the Ascorbic Acid method increased by 45.4 % (from 0.0778 ppm to 0.1133 ppm). The Malachite Green method suggested an increase of 124.7 % in total phosphorus (from 0.0445 ppm to 0.1000 ppm). Each method detected phosphorus at varying levels but both illustrated a trend of increasing concentrations through the months of May-August for each testing site. The data overall represents the need for continuous monitoring of these waterbodies and a concerted effort to abate further impairment.

RESEARCH

TERRA C. PETTIT-BACOVIN

I am an upstate native, and Converse II student pursuing my B.S. in Chemistry with an expected Graduation date of May 2022. My future plans are to pursue a PhD in Chemistry at Clemson University and eventually pursue a career in water resource management.



SYNTHESIS OF SMALL MOLECULE MOLECULAR ROTORS TO ASSESS THE CATALYTIC IMPACT OF BORONIC FUNCTIONAL GROUPS

Authors: Alyssa Cox; School of Humanities, Sciences & Business, Converse University
Cassidy Hall; School of Humanities, Sciences & Business, Converse University
Alexander N. Manzewitsch; College of Arts & Sciences, University of South Carolina
Binzhou Lin; College of Arts & Sciences, University of South Carolina;
Ken D. Shimizu; College of Arts & Sciences, University of South Carolina

Faculty Advisor: Dr. Sheri Strickland; Professor of Chemistry

CB: Chemistry/Biochemistry

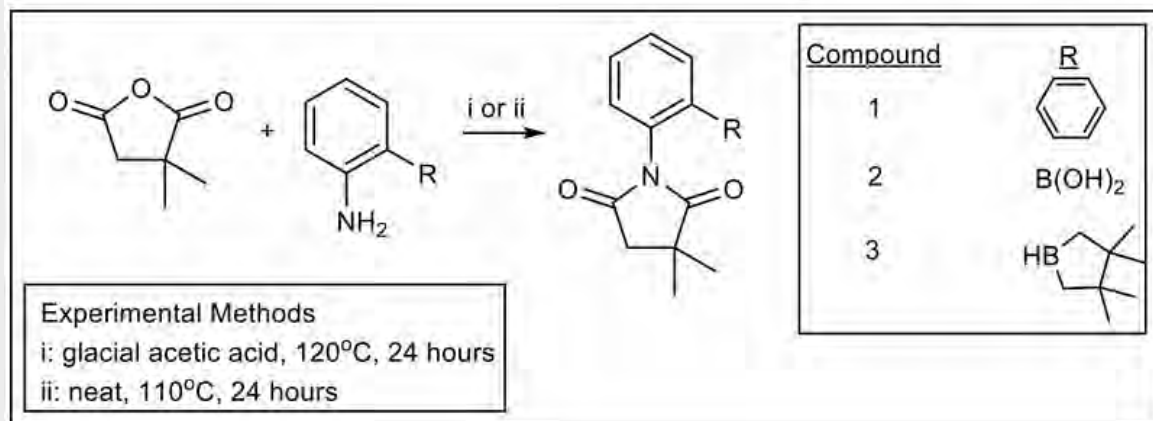
Introduction/Background. The role of boronic acids in medicinal chemistry is growing, with recent knowledge surfacing of the inhibition of cell growth and cancer. The $n \rightarrow \pi^*$ interactions have proved to stabilize the transition state due to noncovalent interactions between the carbonyl oxygen and the ortho-boron of our molecular rotors. This interaction will increase the rate of the associated chemical reaction, giving the boronic functional groups a catalytic role.

Hypothesis/Goal of Study. The goal of our study was to investigate whether the presence of a boronic functional group would lower the rotational barrier in an N-aryl succinimide, revealing a stabilization of the transition state in this process.

Methods and Results. Three N-aryl succinimides were synthesized from 2,2-dimethylsuccinic anhydride and three different ortho-substituted anilines using two different methods. ^1H NMR (**N**uclear **M**agnetic **R**esonance) spectroscopy was used to analyze each of these compounds. Specifically, we were looking at the signals representing the $-\text{CH}_2-$ of the succinimide ring and the geminal-dimethyl substituents. When the rotational barrier about the Caryl-Nimide bond is high enough so that rotation is restricted, each of those signals will be a singlet (2H and 6H, respectively). If the rotational barrier is lowered so that rotation is not restricted, these signals will become more complex.

Conclusions. The replacement of an ortho-hydrocarbon group with an ortho-boronic functional group results in more complex ^1H NMR signals for the two important signals. This reveals that changing the ortho-substituent from a phenyl group to a boronic functional group results in faster rotation about the Caryl-Nimide bond.

RESEARCH



Conclusions. The replacement of an ortho-hydrocarbon group with an ortho-boronic functional group results in more complex ¹H NMR signals for the two important signals. This reveals that changing the ortho-substituent from a phenyl group to a boronic functional group results in faster rotation about the Caryl-Nimide bond.

ALYSSA COX



CASSIDY HALL



THE INTERSECTION OF VISUAL ARTS PRACTICE AND ADAPTIVE LEADERSHIP THEORY IN EDUCATION: A PHENOMENOLOGICAL STUDY

Author: Catharine B. Cassell; School of Education & Graduate Studies;
Doctorate in Professional Leadership (EdD)

Faculty Advisor: Dr. Jeffery Martin; Assistant Professor in the Professional Leadership Program

By exploring art practice in tandem with Adaptive Leadership Theory (ALT), the study helps justify the practice of the arts, clarifies the value of artistic thinking, suggests improvements for leadership development in education, and connects the fields of the social sciences, education, leadership studies, and the arts. The study explores how making art and leading, the dual practices of visual artists who are also education leaders, offers insight for educational institutions grappling with change. Educational organizations are ideal settings for analysis using ALT, a theory in which change is accepted as inevitable and urges leaders to mobilize their organizations to address it. The practice of visual arts fosters creativity and being open to change but is undervalued in educational hierarchies. Meanwhile, leadership in education suffers from high turnover. Improved leadership development programs are needed to prepare new leaders to deal with increasing volatility in education, such as the Covid-19 pandemic and demographic shifts. The research examines how the studio practices of visual artists intersect with ALT, leadership pathways, and leadership development. Twelve visual artists who are also leaders in educational organizations were interviewed for the study. The study uses the qualitative method of interpretive phenomenology to investigate how the participants made sense of their dual actions: making art and leading. The study analyses and delineates the artists/leaders' approach to solving problems and identifies it as a vision/revision cycle. The study explains how the vision/revision cycle (a) encompasses strategies similar to ALT, which builds on the work of ALT progenitor Heifetz (1994), and (b) can be applied to field of leadership development with implications for improvement. By explaining how artists/leaders merge their practices while leading in educational institutions, the study supports Freedman (2010), who argued reflective thinking and creative problem-solving is strengthened through art practice and transfers to other aspects of the practitioner's life, particularly leadership and social agency, a notion grounded in Dewey (1934).

Keywords: Adaptive Leadership Theory, visual arts, phenomenology, education, art education, qualitative leadership research.

RESEARCH

BIBLIOGRAPHY

Dewey, J. (1934). *Art as experience*. The Berkley Publishing Group.

Freedman, K. (2010). *Rethinking creativity: A definition to support contemporary practice*. *Art Education*, 63(2), 8–15.

Heifetz, R. (1994). *Leadership without easy answers*. Harvard University Press.

CATHARINE B. CASSELL

Catharine Cassell is a candidate for the degree Doctorate of Education in Professional Leadership and expects to graduate May 21, 2022. She considers herself an artist/teacher/scholar. She earned an MFA in Jewelry, Metals, and Enameling at Kent State University in Ohio in 2004. She teaches Metalsmithing at the Fine Arts Center in Greenville, SC, where she lives with her husband and two daughters. She exhibits her artwork regionally, nationally, and internationally and is looking forward to conducting more research about the benefits of visual arts practice. Check out her website katybergmancassell.com for more information and images of her artwork.



ATOMIC BEER LAB (PROJECT ONE)

Authors: Caylee N. Taylor; School of the Arts; Interior Design

Jordan F. Onufer; School of Education & Graduate Studies; Child and Family Studies

Faculty Advisor: Meirav Goldhour; Carrie Cathcart Owings '33 Professor of Interior Design

Atomic Beer Lab is a brewery and bar hangout space that is going to be built in Las Vegas, Nevada. The clients, Daniel Arecco and Scott Staggs would like to have their modern, futuristic, high-tech brewery concept executed. This building needs to be big enough to include the fermentation tanks, brewing process, a lab, an office, a conference space, storage areas, cold storage, loading/unloading zones, a bar area, an outdoor patio, and a small kitchen. They want this space to be a bar where adults can hang out and be able to get a taste of what the brewing process is like. An important aspect of the design desired is a light and airy feeling. This concept will be executed by implementing an open floor plan with inviting spaces and an interesting exterior. Since an open and inviting feel is desired, there will be a plethora of garage doors and large windows. When designing, it is important to include all aspects of design such as interior, exterior, plumbing, and lighting. The design of the space will include a mixture of modern, industrial, and futuristic styles. The color scheme will include white, black, rust orange, and colors from their logo.

RESEARCH

CAYLEE N. TAYLOR

Caylee Taylor is a senior at Converse University and will be graduating in May of 2022. She is majoring in Interior Design and minoring in Arts Administration. Caylee is the daughter of Spartanburg natives Clegg Taylor, a chaplain at Pelham Hospital, and Carla Coyle, an English and Creative Writing teacher at Boiling Springs 9th Grade Campus. She has interned with Nomi Pratt Interior Design Company, Mcmillan Pazdan Smith Architecture, and is currently the intern at Ballet Spartanburg. Currently, Caylee works part-time at Willy Taco in Boiling Springs. After graduation, Caylee hopes to work for a hospitality or commercial design firm.



JORDAN F. ONUFER

Jordan is a senior at Converse University, studying interior design, graduating this year, 2022. Her hometown is Boiling Springs where she graduated at Boiling Springs High School. Jordan's plans after graduation include working for a residential design company and then opening up her own residential design and contracting business. Jordan's interests include, design, painting, ceramics, architecture, historic design and architecture, running, and landscaping/landscape design and architecture.



ATOMIC BEER LAB (PROJECT TWO)

Authors: Allyson K. Fisher; School of the Arts; Interior Design
Deja N. Quiller; School of the Arts; Interior Design

Faculty Advisor: Meirav Goldhour; Carrie Cathcart Owings '33 Professor of Interior Design

This design is meant to achieve a modern industrial look, along with a science and indoor-outdoor aesthetic. This is shown through a color palette of earth tones, purples, blues, and wood tones, with accents of gold and silver. The use of biophilia gives the brewery an indoor-outdoor feel, while the artwork and wall art aid in creating an atmosphere that represents the values of Las Vegas and an underlying science theme. This science aesthetic is further implemented with circle motifs that mimic the shape of atoms and resemble the logo. With the use of windows and glass walls, there is a lot of natural light implemented in the space.

RESEARCH

ALLYSON K. FISHER

Allyson Fisher is an interior design major, who is graduating in May of 2022. She currently resides in Matthews, NC. Her plans after graduation are to work at a residential interior design firm in the Charlotte Metro area.



DEJA N. QUILLER

Deja Quiller is an interior design major, who is graduating in May of 2022. She currently resides in Edgefield County. Her plans after graduation include working in the commercial design field, but she also wants to explore as many options as possible.



ATOMIC BEER LAB (PROJECT THREE)

Authors: Mary C. Kitchens; School of the Arts; Interior Design
Kamari S. Wright; School of Education & Graduate Studies; Child and Family Studies

Faculty Advisor: Meirav Goldhour; Carrie Cathcart Owings '33 Professor of Interior Design

The design style for the space will be **modern and futuristic**, with a **complementary color scheme**. There will be emphasis on color, viewing of the distillers, an outdoor patio with a stage, and an outdoor green wall. **Viewing of the Production Area** will have public access from the outside, so the customers can be part of the brewing process while there. Lighting will also be an important feature since this is an unconventional bar. Thus, the lighting design will be primarily **LED**. The space will also be an **open concept**, with free-range from the bar area and lounge seating to the outdoor patios and stage. In addition, there will be **special features** such as custom suspended ceilings and skylights, Conversation Pits, a custom bar, and octagonal, LED acoustical panels.

RESEARCH

MARY C. KITCHENS

My major is Interior Design with a minor in Arts Administration. I will graduate in May of 2022, and my plan is to work at a residential or residential/small commercial firm in the GSP Area, Charlotte, or Myrtle Beach. My hometown is the Spartanburg/Roebuck/Woodruff area, so I have lived here practically my whole life. It has been wonderful growing up here and seeing the growth of Spartanburg.



KAMARI S. WRIGHT

My name is Kamari Wright, I am from St. George, SC. I am a senior Interior Design major here at Converse who is expecting to graduate in May of this year. After graduation, I have plans to open my own design firm and boutique.



ATOMIC BEER LAB (PROJECT FOUR)

Authors: Aubrey L. Miles; School of the Arts; Interior Design
Rachel Martinez; School of the Arts; Interior Design

Faculty Advisor: Meirav Goldhour; Carrie Cathcart Owings '33 Professor of Interior Design

Within this brewery, the desired style is futuristic, modern, scientific and high tech. To bring this vision to life, the color scheme will consist of black, white and gray with metal and wood accents. To add color to the space, the use of LED colored lights will be used throughout to portray the futuristic theme. To carry on the scientific theme, modern-industrial style furniture will be used as well as scientific themed accents. The overall layout of the brewery will be open and interactive to accommodate the many visitors.

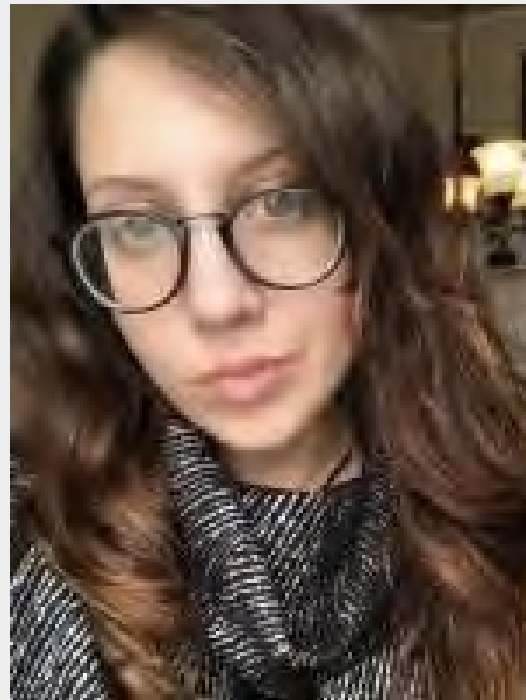
RESEARCH

AUBREY L. MILES

I'm an Interior Design major, graduating in May of 2022. I'm originally from Charlotte, NC - I moved to Spartanburg, SC when I was in elementary school and graduated from Boiling Springs High School. After graduation I'm planning to find a job at a residential design firm in Asheville or Greenville that may also have a focus in commercial design. My design niche is a neutral color palette with some pops of color using eclectic, rustic & Scandinavian styles.



RACHEL MARTINEZ



SYNGNATHIDAE LIFE AWARENESS

Authors: Catherine Ceva; School of the Arts; Studio Art

Faculty Advisor: Jena Thomas,; Associate Professor of Art

Through the means of art, it is possible to point out the importance of environmental concerns. Syngnathidae Life Awareness aims to bring about an awareness of an endangered marine species, which includes seahorses, sea dragons, pipefishes, and other Syngnathiformes. Each work within this series explores research that supports a wide range of current conservation projects for this threatened species. Using various methods of pastel drawing and ceramic techniques, this body of work conveys realism based upon images and decades of long scrutiny from the Conservation of International Trades in Endangered Species (CITES), International Union for Conservation of Nature (IUCN), and the Seahorse Project. The purpose of this work is to bring them to the forefront of our everyday lives, so they are no longer “out of sight, out of mind”. This body of work intends to be more than just decoration that is pleasing to the eye, but rather serve as a visual testimony to the concerns of human interaction to nature. It also seeks to produce an emotion in the viewer’s eye that will bring a change in human responsibility to nature and its preservation. Many Syngnathids are threatened by pollution, habitat loss, climate change, other invasive species, mass global trade, and direct exploitation in the form of overfishing and bycatch, corresponding to these marine conservative organizations. It offer a scientific understanding of the species and why they are endangered to educate the public about their uniqueness and the reason for their decline. My goal is to produce a human desire to alter human activity and preserve the environment of this species. Hopefully, this body of work will create a greater awareness and an appreciation for these creatures through a concern for the ocean.

CATHERINE CEVA

Catherine Ceva is a deaf artist living and working in Spartanburg, South Carolina. She was born in Charleston, SC, and graduated from the South Carolina School for Deaf and Blind (SCSDB) in May 2009. After transferring to Converse University from Spartanburg Community College in July 2015, Ceva focused on earning her BFA in Studio Art and is expected to graduate in Spring 2022. Her preferred art media include colorful pastels, charcoal, ceramics, and handwork crafts. Ceva's body of work is a form of marine conservation, which aims to bring about an awareness of the Syngnathidae. She recently won a Juror's Choice award from the 8th Annual Juried Exhibition, Spartanburg County Public Library, Spartanburg, SC.



DO MILLENNIAL SPEECH-LANGUAGE PATHOLOGISTS, SCHOOL PSYCHOLOGISTS, AND SPECIAL EDUCATION TEACHERS PREFER AUTHENTIC LEADERS?

Author: Leiloni N. Smith; School of Education & Graduate Studies; Doctorate in Professional Leadership (EdD)

Faculty Advisor: Dr. R. Lee Givins, Jr.; Assistant Professor of Education

The demographics of speech-language pathologists, school psychologists, and special education teachers in the public education system are rapidly changing with a large influx of millennial-aged professionals. The study attempts to better understand the ideal leadership style of these millennial professionals while providing school leaders with the information needed to improve the work environment. The Authentic Leadership Questionnaire (ALQ) was used in the quantitative study to assess the leadership style of school leaders while also obtaining demographic data on 100 participants isolated to a single upstate South Carolina school district. The ALQ utilizes fixed choice, five-point Likert scale responses. The survey explored the relationship between the perceived authentic leadership style and Millennials, as well as the preferred leadership style of all study participants, regardless of generation and its relationship to each chosen profession. Survey responses were separated into generational focus groups and professions. The data was analyzed for confirmatory factor analysis and hypothesis testing. The data suggest that speech-language pathologists and school psychologists rated their leaders as authentic leaders but did not prefer an authentic leader. In contrast, special education teachers rated their leaders as authentic leaders and prefer authentic leaders. The data also suggests that both Millennials and Non-Millennials do not differ in their preference for an authentic leader. The study used a non-experimental design and a convenience sample, which does not establish causation; therefore, the limitations of the study restrict the ability of these results to be applied to a larger population. The findings in the study do present opportunities for further research that would expand the scope of the survey beyond the limitations of special education professionals in education. Additionally, research should be conducted to differentiate between authentic and authentic transformational leadership as a significant overlap was uncovered in this research. Lastly, replicating this study with a broader sample size to include a more diverse population, particularly in gender, would provide insight into the preferred leadership style of the studied population.

LEILONI N. SMITH

I am a Lead Speech-Language Pathologist pursuing an Ed. D. in Leadership. I am projected to graduate May of 2022. I received my B.S. in Communicative Disorders and my M.S. in Speech-Language Pathology at Mississippi University for Women.



COST OF ENFORCING THE MASK MANDATE ON PRIVATE ENTITIES

Author: Valentina Aparicio; School of Humanities, Sciences & Business;
Mathematics and Business Administration

Faculty Advisor: Dr. Bilal Celik; Assistant Professor of Business

The purpose of this research sponsored by SC INBRE is to analyze the impact of the mask mandate on Google reviews utilizing Walmart data for the states of South Carolina and North Carolina throughout the year 2020. Throughout the Summer and Fall 2021, Dr. Celik and I managed to successfully establish a relationship between the mask mandate application and its effects on the Google reviews of Walmart stores in the states of South Carolina and North Carolina utilizing simple linear regression, a method that follows the formula:

$$y = \beta_0 + \beta_1 x + \varepsilon$$

where y represents the monthly review ratings for Walmart stores, x is the dummy variable, ε is the error term, and β_1 represents the variable of interest. We successfully analyzed a total of 1,703 observations for both states and noticed an overall 0.082 increase in the review ratings after the mask mandate was implemented in the month of July 2020. South Carolina had an average review rating of 3.94 (on a scale from 1 to 5), while North Carolina had an average review rating of 3.82. See monthly average review ratings in Figures 1 and 2 below. When the mask mandate was applied in July 2020, South Carolina showed an average increase of customer reviews of 0.060. Similarly, North Carolina showed an increase of 0.110. These results show that the findings for both states were significant at the 1% level, which means that there is a 99% chance that this is true for the larger population – that is, all the other states in the United States. However, to show that this behavior is indeed true for all stores in all states, we would have to run the same analysis on all stores in the country – which is very costly and time consuming.

RESEARCH

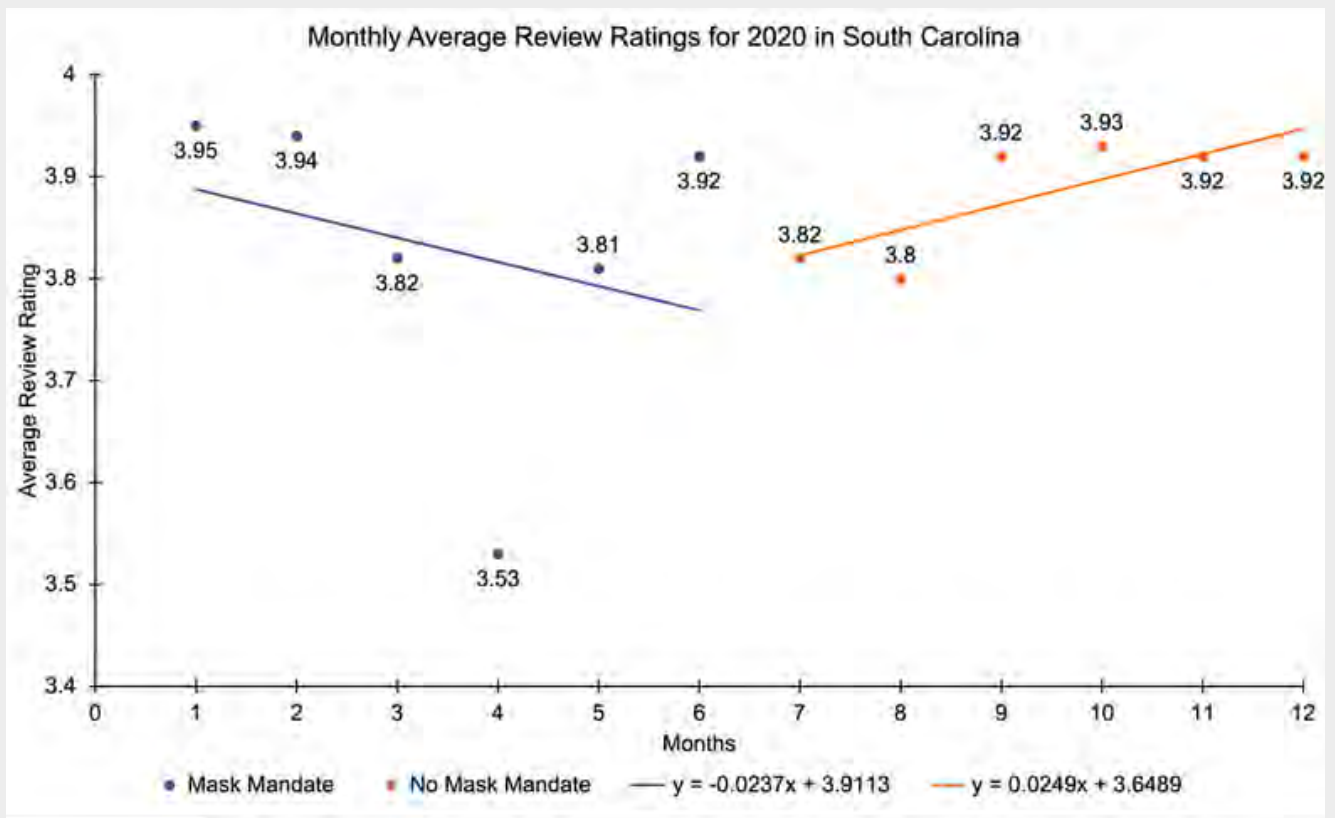


Figure 1

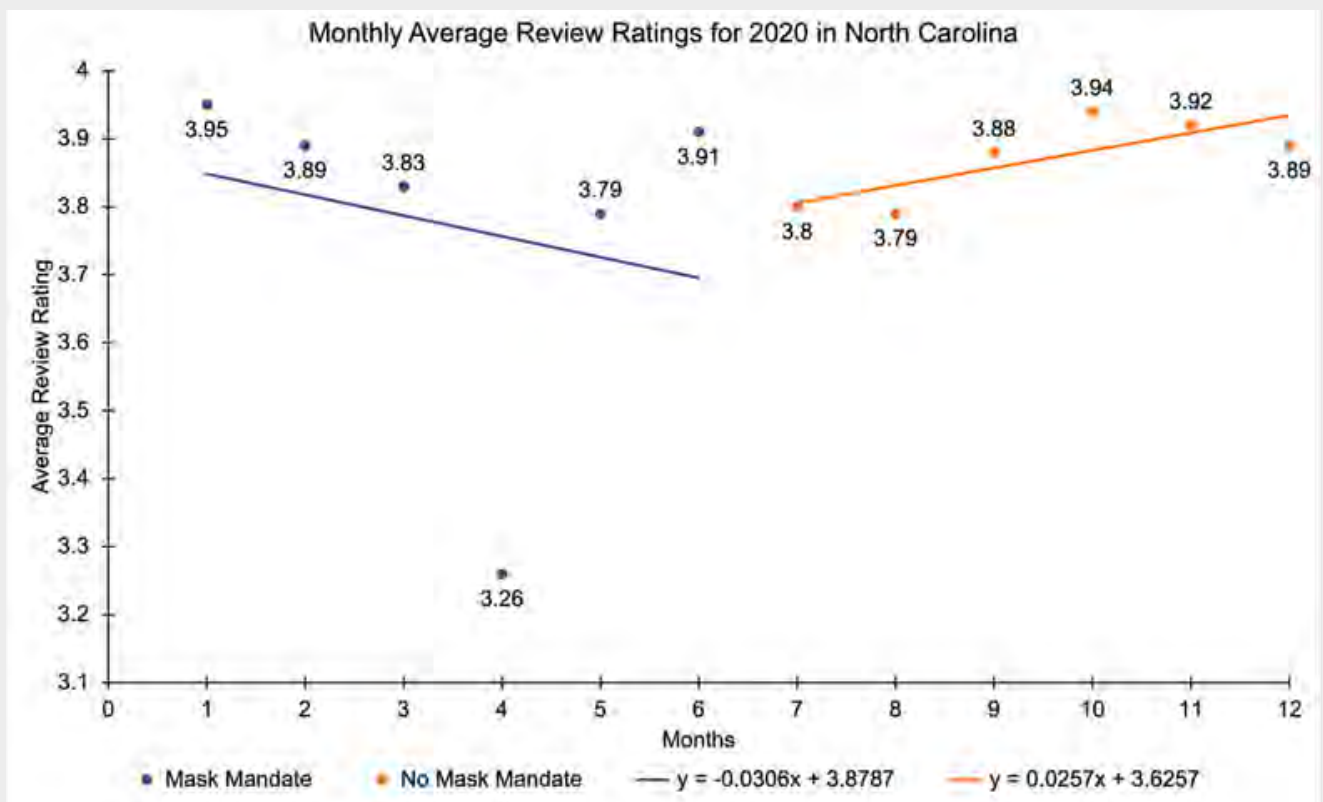


Figure 2

RESEARCH

Even though we successfully showed an impact on the Walmart Google reviews in the states of South Carolina and North Carolina, there exist various flaws in our methodology. First, we are only considering one specific store chain – that is, Walmart – and two states – South Carolina and North Carolina. Therefore, this cannot be considered a strong indicator of the mask mandate's impact on every store in every state of the United States. Hence, the next step would be to expand our analysis nationwide and include other data from stores like Target, Costco, and others. Implementing other models would also strengthen our results by accounting for state and county policies since those are also important factors to our research purposes. One possible methodology we could implement follows the formula:

$$y_{it} = \beta^0 + \beta^1 1\{stricter\}_{it} + \beta^2 preference_{it} + \beta^3 x_{it} \\ + \beta_4 1\{stricter\}_{it} * preference_{it} + \beta_5 1\{stricter\}_{it} * x_{it} + c_i + t + \varepsilon_{it}$$

where y is the review rating for store i at time t , $1\{stricter\}$ is an indicator function for whether a store's policy is stricter than the county's requirement, $preference$ is the preference about mask mandate in county i at time t , c is the store fix effect, and t is the time fix effect.

Unfortunately, we could not access the data for additional states or stores. Hence, we could not try any different models in other states. As a result, we continued our literature search, and we came to the following conclusions. First, the mask mandate is low-cost and harmless to the economy as it allows safe mobility and in-person transactions. Thus, I do not see why it would negatively affect Google review ratings in stores like Walmart, for example. Second, it is important to understand what factors make people hesitant to wear masks so that we can successfully address those factors in the regression analysis and thus account for variations in Walmart's ratings on each region. Lastly, it is important to understand that not all restrictions work in all states and that some prevention measures will negatively affect some states more than others. As a result, mask mandate impacts will differ according to the state, and this needs to be taken into consideration during data analysis by possibly adding extra variables to the regression analysis.

To conclude, the optimal way to accurately determine the impact level of the mask mandate in 2020 on stores in the United States would be to conduct analysis on data corresponding to all possible stores in all states. Furthermore, several factors should be considered in the analysis, like restrictions, preferences on mask use, among others. Overall, an accurate analysis would be costly and time consuming, not considering the possibility of missed data and lack of resources, but it will optimally show the truth about the mask mandate impact on private entities in the United States.

VALENTINA APARICIO

My name is Valentina Aparicio and I am an international student-athlete from Argentina double majoring in Mathematics and Business Administration with a Finance concentration. I am currently a senior and I will graduate in May 2022. After graduation, I will be pursuing my master's in Quantitative and Computational Finance at Georgia Institute of Technology starting Fall 2022.



RESEARCH & SCHOLARLY SUBMISSIONS: **INTERNSHIPS**



INTERNSHIPS

Author: Jovana Mitic; School of Humanities, Sciences & Business; Mathematics

Organization/Business: Camp Kippewa

This project is focused on participant data from Camp Kippewa, a residential 3.5 week camp for girls ages 7 to 15. The primary focus is to use historical camper data to predict whether a particular camper will become a repeat customer. Python is used to create a tree trained on select data for this prediction. An evaluation survey was used to collect additional data from 2021 campers to inform advertising based on campers' preferences and on frequently enjoyed aspects of camp. Other data analysis including clustering and marketing tools that Camp Kippewa should use to attract more campers and to keep returning ones will also be presented

JOVANA MITIC

Pursuing a degree in Mathematics with minors in Data Science and Computer Science. After graduation in 2023, I plan to pursue my PhD for Applied Mathematics. I'm from Nis, Serbia.



INTERNSHIPS

Author: Allyson K. Fisher; School of the Arts; Interior Design

Organization/Business: Robert T Foster Design Studio

My Responsibilities:

- Creating Revit Enscape renderings and walkthroughs of each ongoing project.
- Create a Revit model of each home's first floor (and the second floor only when requested).
- From the Revit model, I created Enscape renderings of specific areas on the first floor (the kitchen, family room, outdoor terrace, and any other spaces that had interesting ceiling details) and a comprehensive walkthrough in Enscape.
- Taking notes during client meetings.
- Editing CAD drawings from working drawings to marketing drawings, which are shown to clients.

My Experience:

- Skills gained in Revit from having to teach myself how to do certain things in the program to complete the renderings and walkthroughs.
- The biggest challenge I encountered was the short deadlines for each set of renderings and walkthrough for each home design I provided.
- This pushed me out of my comfort zone because I'm used to the slower pace of how projects are timed out in our courses; rather than a two or three-day deadline.
- What I learned about myself from this experience is that when given the right motivation and time, I can find the answer I am looking for instead of giving up when I can't find it on the first try.

My Career Goals:

My personal goals have changed from wanting to hone my skills and knowledge in every design software that is taught in our courses to putting more focus on learning more about Revit and the Enscape plug-in for Revit, since that is the program that I used for the projects I did this summer.

My career goals have evolved from wanting to find a job in any residential firm specializing in homes that sparks my interest to a residential firm that takes part in custom home design and renovations.

INTERNSHIPS



These renderings show an L-shape kitchen that looks out into the family room, which has a fireplace and access to an outdoor terrace.

INTERNSHIPS

Robert T Foster Design Studio:

Robert T Foster Design Studio consists of one architect, offering design services, and outsources contractors and builders for his projects. Foster is an accomplished residential designer with over thirty years of experience. His designs are evident in North and South Carolina, including Charlotte, Raleigh, Greensboro, Lake James, Columbia, and the states of Illinois, Tennessee, and Texas. He has served on the Architecture Review Boards for several local North Carolina communities, contributed to Builder/Architect Magazine, and has judged numerous home design competitions. Additionally, he has designed the two Charlotte homes for Extreme Makeover: Home Edition.

ALLYSON K. FISHER

My name is Allyson Fisher and I'm from Matthews, NC. I'm an Interior Design major, graduating in spring of 2022. My plans for after graduation are to get a job in a residential design firm in the Charlotte Metro area.



INTERNSHIPS

Author: Jordan F. Onufer; School of Education & Graduate Studies; Child and Family Studies

Organization/Business: C. Taylor Interiors

The major I am studying at Converse University is Interior Design, after this year I will have completed my four years at Converse and earn my BFA in Interior Design. I chose to intern at C. Taylor Interiors because Professor Goldhour said it would be a good fit for me, another reason I chose to intern with Mrs. Taylor is that I knew I wanted to work at a Residential design firm. While at C. Taylor Interiors, from May 25, 2021, to July 22, 2021, my job title was an Interior Design Intern. I do not yet have an area of specialization, but residential design and rustic, vintage, and European style are what I lean towards most while designing/creating my projects. In the future, I would like to have my own residential design firm, with a specialization in hospitality.

C. Taylor Interiors is a full-service residential design firm and shoppe. “C. Taylor Interiors is a full-service interior design firm, positioned to offer the most proficient, trusted advice and service in the upstate. Designer Carey Taylor has the formal education and training, coupled with the passion and real-world experience to create exquisite, yet functional style that lasts a lifetime.” (C. Taylor Interiors) “C. Taylor Interiors Owner and Lead Designer, Carey Taylor, ASID, established the residential firm in 1999 and has over 30 years of experience. Formally trained in all design styles, our team is well-versed in the artistic elements of color, balance, and scale. We believe that design is about art and we have the passion to create refined, artistic, and practical style.” (C. Taylor Interiors) At C. Taylor Interiors, some of the services provided in the design studio include design consultations, space planning, furniture selections, lighting and color selections, installation management, custom bedding and linens, renovation management, tile, and granite selections, and custom window treatment designs.

INTERNSHIPS

“At C. Taylor Interiors, we employ a complete support team that assists with each project to provide a pleasant, welcoming, and thorough experience. We have an in-house design studio and resource library that provides our clients with selections from the finest lines of designer fabrics, wall coverings, and hardware.” (C. Taylor Interiors) C. Taylor Interiors’ company mission includes “Fine furnishings tailored to those with inspired taste,” “Phenomenal Spaces,” and “Endless Possibilities...” “We feel that establishing close working relationships with our clients is one of our most rewarding attributes. In beginning a project, we study the client’s individual taste, budget, and lifestyle so that we can provide them with an end result that is uniquely them. By using our design services, our clients avoid making inappropriate purchases and costly mistakes, therefore adding value to their budget. From a single consultation to an entire renovation, and including every aspect of design in between, C. Taylor Interiors, with over 30 years experience, is trained in all design styles. For those who need guidance in reaching their rooms’ full design potential, C. Taylor Interiors has the vision to create phenomenal spaces.” (C. Taylor Interiors)

While interning at C. Taylor Interiors, my responsibilities were to take notes during consultations and installations, keep the design studio and shoppe tidy, organize the resource library when needed, pick out and order fabric samples, answer phone calls, check-in with clients and vendors over the phone, check-out customers when needed, create inspiration boards and presentations for clients, help out on installation days, pick up the mail, conduct research for new clients and recent design projects, make appointments for clients, make purchase orders and invoices, and help Mrs. Taylor on appointments. Every day at C. Taylor Interiors looked a little different. When opening up shoppe, my responsibilities were to turn on all the lights, water the plants, light the candle on display, turn on the music, and set up our display outside. After opening the design team would then get our notes out and listen to what Mrs. Taylor would want us to complete that day. A few projects the interns got to work on while working at C. Taylor Interiors included, creating a new brochure for the company, updating the company websites, creating inspiration boards, picking fabrics and wallcoverings for projects, and re-organizing the resource library; along with other areas in the design studio.

INTERNSHIPS

The most important knowledge from my studies at Converse that I brought with me to this internship include, the general knowledge of interior design, time management practices, and the ability to juggle multiple tasks at one time. During my internship, these skills were applied to my daily responsibilities at C. Taylor Interiors. Throughout this internship experience, some transferable skills I developed include, being more familiar with vendors and fabric companies, communication skills, learning the entire process of a design project, working with clients, and learning the process of working with different companies to get the design projects finished; tile shops, framing shops, freight companies, fabric companies, furniture companies, drapery seamstress, cabinet makers, etc. One of the biggest challenges I encountered while interning at C. Taylor Interiors was learning how to use their filing system and order forms. This was very challenging for me because the system in place was a little outdated and had to be done very precisely. Some ideas or questions that were raised as a result of this internship experience were, “are these the type of clients I want to be working with,” “do I want to be a custom residential design firm,” “is this system the best way to do this,” “do I want to be a full-service design firm?” In the future, I do know that I want to eventually own a residential design firm and shop. How I want to run it is still up for question, but hopefully interning with more residential designers will help me to figure out what direction I want to go in.

Three actions I will take in the next thirty days to move my career preparation forward include, making a business social media page, getting involved with ASID, and coming up with a future business name. I hope to create a business Instagram page by September 13th. I plan to get involved with ASID by the following week, September 20th. This next month I also plan to research and determine a future business name by September 30th. Four career preparation activities I plan on completing include, updating my resume with my internship information and getting it reviewed by Career Development at Converse, submitting the completed resume with my other assignments, obtaining permission from two professionals in my career field who will be willing to be professional references for me, and listing their names and professional positions with my other assignments.

INTERNSHIPS

JORDAN F. ONUFER

Jordan is a senior at Converse University, studying interior design, graduating this year, 2022. Her hometown is Boiling Springs where she graduated at Boiling Springs High School. Jordan's plans after graduation include working for a residential design company and then opening up her own residential design and contracting business. Jordan's interests include, design, painting, ceramics, architecture, historic design and architecture, running, and landscaping/landscape design and architecture.



INTERNSHIP

Authors: Aubrey L. Miles; School of the Arts; Interior Design

Organization/Business: Sarah Catherine Collective

I am Aubrey Miles; I was a design intern at Sarah Catherine Collective from June 1st-August 30th. I am an Interior Design major at Converse University with an interest in specialization in high-end residential design and some small commercial design. Because of that interest, SCCo stuck out to me the most when I was looking for internships because that is exactly what they do!

Sarah Catherine Collective is a high-end design firm that offers a fully custom package for its clients. Over the years, SCCo has moved from only residential design projects and has moved to some smaller commercial projects as well. With SCCo's packages, the CEO, Sarah Catherine, offers a one-on-one package where she is individually working on the project and with the client with her undivided attention, the half and half package where the project is supervised by Sarah Catherine and worked on by her as well as the SCCo team. That way, half of the weight is on her, and the team and the efforts are shared. Lastly, there is the team-only package where just the SCCo team is working on the project with supervision and final design choice by Sarah Catherine. All of these packages are fully custom and vendor sourced ranging from new builds to full renovations. The Sarah Catherine Collective mission statement is "We believe design worth pursuing requires small yet constant acts of defiance. A fierce creative spirit that refuses to settle and relentlessly reaches beyond the expected to something more, a result that is often intangible at first but once achieved... feels timeless, moving, undeniably if inexplicably right. It's with this philosophy in mind that we set out to fiercely defy ordinary on each and every project." While I was an intern at Sarah Catherine Collective, my responsibilities were to assist the Senior and Assistant designers with any tasks they needed me to whether it be running to pick up samples, pricing materials, assisting with project presentations, organizing the materials library, or updating their vendor list. On a normal basis, I helped my Senior Designer complete project presentations or edit them based on changes from the contractor. So, I helped arrange the project pages in InDesign with the "option 1 & 2" choices by placing them to scale, dimensioning them, and categorizing them by room from the entrance of the space to the exit. One of the projects I was more involved in was rendering the exterior of a client's home in InDesign.

INTERNSHIP

Because of what I have learned at Converse (specifically Photoshop & AutoCAD) I was very quick to pick up on how to learn InDesign. InDesign is not in the curriculum at Converse, but we did learn other Adobe Suite programs which translate very easily to each other. With knowing AutoCAD so proficiently, I was able to quickly pick up on their formatting of drawings and could imitate it well. One of the most prominent things that pushed me out of my comfort zone when I was there was learning to be more confident in myself as well as more open-minded and daring with my designs. SCCo sets the bar when it comes to originality and daring, and it is all I strive to be, and getting it is not easy! So, getting my mind working on the same level as the rest of the team was the biggest challenge for me. However, dealing with that struggle made me learn that I need to be comfortable with myself and trust myself. I know what I want to do, I know what I can do, I just have to believe that it can transfer to the screen. In light of this experience with SCCo, it helped evolve some of my personal goals by pushing me to be more open to what I can do and what I want. If I am not happy with my environment, change it. When looking for jobs upon graduation I know to skim through design firms with a fine-tooth comb, so I know I get myself into a prosperous, healthy, and inspiring firm with genuine and talented coworkers! Because of all of my realizations while at Sarah Catherine Collective, there are a few steps I would like to take within the next month to move my career preparation forward! The main thing I want to do is update all of my design social media as well as my website. (8/30) I then want to start looking at potential employers in all of the places that I am considering starting my career in. (8/26) And finally, I want to consider joining an interior design organization like ASID or LEED! (TBD)

AUBREY L. MILES

I am an interior design major graduating in May of 2022. I am originally from Charlotte, NC but moved to Spartanburg, SC when I was younger. My intention after graduation is to find a design firm that focuses in commercial or residential design and shares a similar affinity to the design styles I like which are modern/Scandinavian/Japandi/eclectic vibes. My potential "10-Year Plan" is to start my own interior design business and build my own firm that has a focus on primarily residential projects and smaller commercial projects.



INTERNSHIPS

Author: Anna B. Seebeck; School of Education & Graduate Studies; Child and Family Studies; School of Humanities, Sciences & Business; Psychology

Organization/Business: Spartanburg District 6/ Fairforest Middle School

This semester, I had the opportunity to do my Child and Family Studies internship through Fairforest Middle School as a substitute teacher and volunteer. On days that a teacher was not able to attend work, I filled in for them. In doing this, I was to create a warm and welcoming environment for the students to be able to learn and improve their educational development while their teachers were absent. The safety and well being of each student was another major factor in this job. On days that there were not any openings to substitute, I volunteered for the school and helped those at the front office and guidance office. Overall, it was a very enlightening opportunity and I enjoyed the experience.

ANNA B. SEEBECK

I am double major in Psychology and Child and Family Studies, and I plan on graduating in 2022. My hometown is in Spartanburg, South Carolina.



INTERNSHIPS

Author: Ashley D. Frady; School of Education & Graduate Studies; Child and Family Studies

Organization/Business: Quiverful Adoptions

During my internship I learned about the adoption process in South Carolina. I helped with embryo donations, surrogacy and also birth mothers. I learned the legal bearings of adoption and surrogacy. I helped to do intake calls and support calls for birth mothers and those considering adoption.

ASHLEY D. FRADY

My name is Ashley. I will be graduation Converse in May 2022 with Bachelors in Child and Family Studies with a Minor in American Sign Language. I am a Converse II students and the first in my family to get a college degree. I am married to my high school sweetheart and we have 3 kids. After graduation I will continue to work at Await Surrogacy and I plan on attending USC Upstate in the fall to receive a Child Advocacy Studies certificate. I am also a volunteer Guardian Ad Litem for Spartanburg County.



INTERNSHIPS

Author: Kamari S. Wright; School of Education & Graduate Studies; Child and Family Studies

Organization/Business: Interior Elements, Charlotte, NC

While working with Interior Elements, I fell more in love with the world of design. I was shown that there are far more avenues to take within the community than what we (students) originally knew. During my summer there I was shown a new software, introduced to multiple vendors, actively participated in client meetings, and traveled to the Raleigh branch for a week. While only being there for two short months, IE has shown me what modern office/work culture should be like. I was extremely grateful to have been able to spend my summer with them.

KAMARI S. WRIGHT

My name is Kamari Wright, I am from St. George, SC. I am a senior Interior Design major here at Converse who is expecting to graduate in May of this year. After graduation, I have plans to open my own design firm and boutique.



INTERNSHIPS

Author: Deja N. Quiller; School of the Arts; Interior Design

Organization/Business: Design 1-1/Curtain Call

Throughout my internship experience, my mentors taught me valuable design and professional lessons. When working with a team, I learned that communication is key in ensuring a project goes smoothly. For the majority of the projects, I had to quickly improve my problem-solving skills and learn new techniques on the job. I had the opportunity to sit in on client meetings and observe how different clients react. Engaging with the clients gave me a chance to improve my communication skills. One of the challenges I faced was learning how to manage my time between school and work. Overall, my experience made me a better designer and professional. My internship also allowed me to form connections with the people I worked with.

DEJA N. QUILLER

My name is Deja Quiller, and I am an Interior Design major at Converse University. This May, in 2022, I will be graduating with a BFA. I currently reside in Edgefield County and after graduation I anticipate working in the commercial design field.



INTERNSHIPS

Author: Caylee N. Taylor; School of the Arts; Interior Design

Organization/Business: McMillan Pazdan Smith Architecture; Naomi Pratt Design Company

Over the summer of 2021, Caylee had the opportunity to intern with two companies. Each company has their own unique and individual aesthetics and specialties. She interned with local architecture firm, McMillan Pazdan Smith Architecture, under William Gray. Her second internship was with a local self-owned business, Naomi Pratt Design Company, under Nomi Pratt.

CAYLEE N. TAYLOR

Caylee Taylor is a senior at Converse University and will be graduating in May of 2022. She is majoring in Interior Design and minoring in Arts Administration. Caylee is the daughter of Spartanburg natives Clegg Taylor, a chaplain at Pelham Hospital, and Carla Coyle, an English and Creative Writing teacher at Boling Springs 9th Grade Campus. She has interned with Nomi Pratt Interior Design Company, Mcmillan Pazdan Smith Architecture, and is currently the intern at Ballet Spartanburg. Currently, Caylee works part-time at Willy Taco in Boiling Springs. After graduation, Caylee hopes to work for a hospitality or commercial design firm.



INTERNSHIPS

Author: Azalea NE Acevedo; School of Humanities, Sciences & Business; Creative and Professional Writing

Organization/Business: The BLUE ACE Marketing Group

This internship occurred remotely over the summer of 2021. Responsibilities included writing captions, curating pictures, understanding and creating client brand voices, creating videos and webpages, some onboarding activities, and scheduling and participating in client meetings. The internship also included training in writing for social media, principles behind digital marketing, finding target audiences, and using Facebook for Business and Google for Business. Most of my time was spent promoting a pest control company, which involved some research into bugs, pest management practices, and customer needs in this area. One memorable project was creating and promoting a sweepstakes campaign with the goal of creating more leads from sign-ups. I pitched the name for the “Bug Free” Summer sweepstakes, created the social media graphics and signup page, and posted sign-up reminders on their social media pages. Another major project involved a property management company that became a client during the internship. I was able to practice creating an “avatar” of the client’s average customer, then create content based on this demographic’s concerns. By the end of the internship, I strengthened my content creation abilities, learned to write for digital platforms, practiced professional communication, and honed my research abilities.

AZALEA NE ACEVEDO

I graduated in 2021 with a BFA in Creative and Professional Writing. After graduation, I returned to Charleston, where I am currently searching for a full time job or an internship in publishing, and work part time in marketing and tutoring.



INTERNSHIPS

Author: Madeline O. Merrell; School of the Arts; Art History and Studio Art

Organization/Business: Upstairs Artspace

At the Upstairs Artspace, I was directly assisting the gallery manager at the time, Merry Beth Noble. Twice a week, I spent five hours with front desk administration tasks. Some of my favorite things to do were creating the weekly newsletter and familiarizing tourists with the town of Tryon. Every six weeks, the Upstairs would install a new art exhibit. Local and international artists alike would show a variety of work. I was in charge of installation of work, inventory, art opening set up, and making sure the opening night of the exhibit ran smoothly. I was also tasked with de-installation of the work as well. I learned many things about the behind-the-scenes of how an art gallery runs.

MADELINE O. MERRELL

I am an Art History and Studio Art double major, graduating this May. After graduation, I plan to continue my education and pursue graphic design as a career. I also want to be a part of Spartanburg Artist Collective and exhibit my paintings locally.



INTERNSHIPS

Author: Alicia J. McComas; School of Humanities, Sciences & Business; Healthcare Administration

Organization/Business: Eden Terrace

I completed my internship at Eden Terrace of Spartanburg. During my internship I was allowed to shadow the Assistant Administrator, Mrs. Sharon Ward, the Executive Director, Mrs. Cindy Hughes, the Head Nurse, Miss. Mindy Roth, and the Engagement Director, Mrs. Cindy Moore. I mainly shadowed The Assistant Administrator through out my internship. She was very informative and helpful and a mentor. I allowed to attend and take notes at the Administrator weekly meetings. During these meeting they discussed about of the over engagement of the community, staff, and residents, anything they noticed or any concerns about the resident, and any upcoming events. These meetings were more based on how the residents will being and how we as a community can help them and get them more engaged. My overall experience with this company, was remarkable and very fulfilling. I learned a lot through all the employees at Eden Terrace, not just the employees that I shadow and aided. I learned a lot from the residents, cleaning, and caregiving staff. The community at Eden Terrace was more of a family than a company. Each of the employees truly cared for each other and the residents

I able to assist Mrs. Sharon Ward with her daily task, like file paperwork, fax, mail, and organize. One of the main tasks I was given, was to perform Fit Test on each employee. The Fit Test was required by OSHA and stated that each employee must be fitted to a N95 mask. To fit the employee to a N95 mask we had to do series of test while the employee wore the mask, to pass they will not be able to smell or taste anything that was sprayed at them while wearing the mask. I was able to assist the Executive Director, Mrs. Cindy Hughes and the Head Nurse, Miss. Mindy Roth with organizing the COVID-19 vaccination cards for employees and the residents of Eden Terrace of Spartanburg. I had to scan in all the cards to their database and then file a copy into their paper file. I gave the employees their COVID-19 vaccine card. It is very important to make sure that everyone is up to date on their vaccines. I assisted receptionist working at the front desk by answering phone calls, talking to residents and their family members, and calling codes the residents' caregivers.

INTERNSHIPS

ALICIA J. MCCOMAS

My name is Alicia McComas and I am a Healthcare Administration major with a minor in accounting. I will be graduating in may of 2022. My hometown is Huntsville Alabama but I have lived in Spartanburg county for most of my life.



INTERNSHIPS

Author: Kelsey H. Elliott; School of Education & Graduate Studies; Early Childhood Education

Organization/Business: First Baptist North Spartanburg

Through my internship at First Baptist North Spartanburg, I have collected the necessary tools to work in a team environment. While working with my site supervisor, youth pastor, and the youth receptionist I have learned so much. I now know how important it is to be able to communicate with multiple different age groups. I communicated with parents, high schoolers, and even elementary ages throughout my internship. I now feel more prepared to step into a classroom and be able to communicate with everyone around me. I also gained the knowledge from multiple leaders around me about the importance of the youth and how being a positive role in their life is. Just saying hey, serving them a waffle, or helping decorate the center table for Friends Giving is showing them love that those students may not always see.

KELSEY H. ELLIOTT

My name is Kelsey Elliott and I am a Early Childhood Education major graduating in spring 2022. I am from Boiling Springs SC and My plans after graduation are to teach in the Spartanburg area.



INTERNSHIPS

Author: Mary Catherine Horton; School of Humanities, Sciences & Business; Healthcare Administration

Organization/Business: Eden Terrace of Spartanburg

Eden Terrace of Spartanburg is a memory care and assisted living facility which houses residential patients. I completed my internship here in the summer of 2021, with the Marketing Department, under Lesa Phillips and Josey Dean. As an Intern, I got to give tours to prospective patients' families and understand the complexity of individual situations. I practiced confidentiality, customer service, and communication skills every day at Eden Terrace. I also was able to plan events both internal and external. We raised \$10,000 for a caregiver battling pancreatic cancer during our "Family Night" which featured the Fuddruckers food truck and a tailgating-styled get-together. In each moment at Eden Terrace, I gained experience and friendships, which have driven me to continue a career in healthcare.

MARY CATHERINE HORTON

Mary Catherine Horton is from Pawleys Island, South Carolina, graduating in May of 2022 with a Bachelor's in Healthcare Administration and a minor in Business Administration as a member of the Nisbet Honors Program and Converse College for Women. With a special interest in Healthcare Quality, she hopes to become a master's candidate for George Washington University's Health Care Quality program. In the meantime, Mary Catherine looks forward to making a positive impact in the Spartanburg Community through the skills she has learned at Converse University.



INTERNSHIPS

Author: Daylee JA Pruitt; School of the Arts; Contemporary Music

Organization/Business: Houla Entertainment

Over the Summer of 2021, I had the incredible opportunity to intern at Houla Entertainment. Houla is an entertainment, promotions, and booking company in Knoxville, Tennessee. The President and Founder of the company, Lee Mayer, started the journey of booking artists for a charity known as “Cause for Paws”. After booking and promoting several bands for this charity, she came to the realization that booking bands was her calling and left the corporate world. As a tribute to her love for animals, she named the company ‘Houla’ after her Catahoula Leopard dog, Isla.

I started as a research and marketing intern who worked around 30 hours a week. I had many responsibilities such as researching booking requirements, festivals at schools and city events, and even talent-scouting. One of my daily responsibilities consisted of calling casinos across the nation and inquiring about their booking details. After either calling 2-3 times, I was able to find out details of the stage available and write them down in a spreadsheet. This spreadsheet consisted of the details of each casino, the booking agent, stage availability, and additional contact information.

During this internship I had to quickly adapt to the demanding nature of the business. As someone who is shy, it was difficult to put myself out there to people who had never met me before. The experience, in the end, made me more confident and affable person to be around. I became very familiar with Excel and its many shortcuts as well as Google spreadsheets. I enjoyed talent scouting as a musician myself and saw many talented artists on the regular. I was more critical and aware of the music others were producing and if they had the potential to fill a booked room.

Throughout this experience I came to terms that marketing and research of music was not the area I wanted to be in. I appreciated the hard work those in this field do as well, all the calls and details they discuss, becoming comfortable with networking over the phone, and being persistent with your business. You must learn that while some may call back, many people do and that shouldn't discourage you from doing your job. I will always remember this experience and the skills it has instilled in me, but I can conclude in confidence that marketing and research is not my area of expertise.

INTERNSHIPS

DAYLEE PRUITT

Daylee Pruitt is a senior majoring in Contemporary Music with a certificate in Music Business. She is from Chesnee, South Carolina. After graduation, she plans to return to Converse to study in the MMFT graduate program. This internship was completed in the Summer of 2021 under the supervision of Houla Entertainment.



INTERNSHIPS

Author: Abbigayle C. Haught; School of Education & Graduate Studies; Early Education;
Child and Family Studies

Organization/Business: Spartanburg Day School

My internship placement was at Spartanburg Day School Summer Camp. Julie Jones introduced me to this opportunity and Seal Wilson approved it. I went into this internship ecstatic about getting to lead academic summer camps weekly. I planned each week for a specific camp, I was let down when I would arrive at Spartanburg Day School and my camp had been completely changed. I learned to adjust quickly and make my plans and ideas work for each camp even if I hadn't planned for it. Another issue I faced was the students, the children wanted summer. They did not want to come to a camp to learn but instead play. Often my plans had to be thrown out the window just to keep the children entertained. There was also no management from the higher-ups in the program. The counselors were often told to give positive reinforcement which only worked so much and ended up with children doing whatever they wanted. I still had an amazing time disregarding the issues and I made great friendships with my coworkers. I would not go back to an internship here but I am grateful for the experience I had.

ABBIGAYLE C. HAUGHT

I am a double major in Early Education and Child and Family Studies. My Early Education degree has add-ons in Elementary Education and Learning Disabilities. I will graduate in May 2022 and I plan to stay and teach in Spartanburg. I am originally from Thornton, Colorado but Acrobatics and Tumbling brought me to Converse.



INTERNSHIPS

Author: Charity Winston; School of Education & Graduate Studies; Child and Family Studies

Organization/Business: Chesnee Elementary School

I completed my internship at Chesnee Elementary School in the Summer of 2021. The program serves 150 students between the ages 7-12. The purpose of this program is to help them improve their academic skills, including content and testing. During my internship I worked under the supervision of Assistant Principal, Brittany Green.

I am a student in the department of Child and Family Studies. This internship was the perfect opportunity for me to gain valuable hands-on experience in my field. My responsibilities included making schedules for teachers for all disciplines, print and copy materials, operating the front office and other daily functions from 7:00am – 2:30pm, Monday – Thursday.

The part I enjoyed the most was spending time with the school children, especially when I got to make 1 on 1 connections with students. This internship program was very enjoyable. I like that it challenged me to think on my feet and I loved being able to assist anyone who needed help. I am looking forward to working in similar settings when I graduate from Converse.

CHARITY WINSTON

Charity is a senior majoring in Child and Family Studies at Converse. She plans to graduate on May 21, 2022. Charity wants to obtain her master's degree in education.



INTERNSHIPS

Author: Piper K. Grant; School of the Arts; Art History; Studio Art

Organization/Business: Converse University

During this internship I was able to interview the grandson of August Cook, get primary sources about August and Irma from their family, see ReNewell Fine Art Conservation, and learn about the processes that are involved in the restoration and conservation of oil paintings. These experiences have taught me many things about the role of art historians and conservators, as well as gave me perspective on how I should take this knowledge with me in the future. With double majors of studio art and art history, I have been able to appreciate new perspectives of artists, their families, conservators, and how paintings change over time through aging and various damages.

The interview with Peter Cook, August Cook's grandson was extremely fruitful in allowing me to get an insider's perspective on August's personality and quirks. I was grateful for Peter Cook because he allowed me to see August Cook as the person, and not strictly as the artist. Familial stories and significant areas and homes that reflect how August and Irma Cook lived their lives and left an imprint on history. I paid special attention to the areas in and around the Spartanburg area such as Drayton Avenue, where the Cooks used to live, and Chesnee, where August Cook retired to after working at Converse College. I also learned more about the relationship between August and Irma Cook and how he always thought that she was the better artist even though she decided not to pursue a career in it. The overall message I got from Peter Cook was that August was a stern, but hardworking and intellectual man, while Irma was a skilled artist and sweet mother. They both made sure their house was filled with art, and their children and grandchildren grew up around art and nature.

Another event in the internship that was very enlightening was the visit to ReNewell Inc. the Fine Art Conservation in Columbia South Carolina. During this visit I had the opportunity to see how oil paintings are restored and conserved and the various processes that go with it. The employees at ReNewell were in the middle of restoring an August Cook painting of Hazel B. Abbot's portrait. I learned so much about a side of art that I never knew anything about. I could definitely see myself pursuing a career in fine art conservation because of this experience!

INTERNSHIPS

Overall, I have learned so much during this internship such as different ways of curating and exhibiting pieces, how to do deep research, how to interview, and the processes of restoration and conservation of oil paintings. This internship was very relevant to my major because learning how to exhibit art in an art gallery and how to preserve it over time are necessary pieces of information for someone who majors in art history and studio art. Virginia Newell also doubled majored in studio art and art history! I plan to use the knowledge and information I learned this summer in future careers because I enjoyed everything I did so much and I hope to continue it later in life!

PIPER K. GRANT

I am from Rock Hill, South Carolina and I double major in Art History and BFA Studio Art. I am currently a junior on track to graduate in 2023. My plan after graduation is to pursue a MFA in Painting and eventually become a professor of fine arts while continuing to be a freelance artist. I have done multiple internships now and am currently a student worker in the Milliken Art Gallery.



INTERNSHIPS

Author: Emma C. Reid; School of Humanities, Sciences & Business; Accounting

Organization/Business: Ford Motor Credit Company

Ford Motor Credit Company is Ford Motor's financial services subsidiary and was founded in 1959. They are the leading provider of automotive financial products and services to both Ford and Lincoln dealers and their customers. "Our mission is to strengthen communities and help make people's lives better." I was a Ford Motor Credit Company Summer Intern for the summer of 2021. For this internship, I was selected as 1 out of 10 students and participated in an eight-week rotation program previewing departments within Ford Credit such as dealer credit, originations, customer service, and sales. Also throughout the summer, I worked on a summer project with two other interns that were based in the Colorado Springs business center. This project focused on how to optimize the customer experience and we presented this project to the top executives of Ford Motor Credit Company at the end of the internship. Throughout this internship, I learned the many specific areas within the finance field and which areas I enjoyed working in. I developed better public speaking and presentation skills, better communication and teamwork skills, and critical thinking skills. In conclusion, I really enjoyed this internship and couldn't have asked for a better experience and a better insight into a potential career field I want to go into. After the internship ended, I was offered and accepted a position in the Ford Credit Development Program and I'll be starting in that position this summer after graduation.

EMMA C. REID

Emma Reid is a senior majoring in Accounting with a double minor in Economics and Business Administration. She is from Flat Rock, North Carolina. After graduation she has accepted a position with Ford Credit in their Ford Credit Development Program. This internship was completed in the summer of 2021 with Ford Motor Credit Company.



INTERNSHIPS

Author: Lanna H. Peterson; School of the Arts, Music

Employer: Spartanburg Philharmonic and Operation Hope

I have completed a variety of tasks and accomplished several large projects for both the Spartanburg Philharmonic and Operation Hope. This internship proved to be a very rewarding experience and I am very excited to share some of the highlights from each of them.

During my time at the Spartanburg Philharmonic, I worked directly under the marketing coordinator, Courtney Oliver, along with two other interns. My tasks included but were not limited to the following: updating public event websites with all 2021-2022 concert season info, working the last Bluegrass Spartanburg concert with Joe Mullins and the Radio Ramblers (this included retrieving all marketing materials from their storage facility and setting up the marketing table prior to the concert and breaking everything down, selling merchandise, greeting guests, acting as a partial usher, placing signs in front of Twichell, and cleaning up after the band's meal.), creating a 2021-2022 concert playlist on Spotify for the Zimmerli Series, writing and creating a series of stories for social media purposes for the Zimmerli series, the Philharmonic itself and for the Youth Orchestra, crafting "pre-concert emails" for the upcoming season, drafting a bluegrass vs. country music blog for future postings, and checking the mail daily along with sending out any items that needed to be posted.

My tasks at Operation Hope, under the direction of Executive Director Susan Tompkins, included but were not limited to the following: creating a Facebook page for the director and for the thrift store portion of the organization, creating an Ebay account, creating an Instagram account, transferring items and supplies from one building to another, uploading store items to all social media platforms weekly, updating listings, answering buyer questions, and helping people coming in from the street to receive relief find the items they need and talking to them/making them feel welcome.

These internships have been very fast paced and very rewarding. I am looking forward to working further with the Philharmonic to create more stories and highlights for the social medias and crafting more pre-season/pre-concert emails.

INTERNSHIPS

LANNA H. PETERSON

Lanna is a senior music major graduating this May, 2022. Lanna plans to attend graduate school and pursuing a master's in music and continue growing her private studio and her cattle farm.



INTERNSHIPS

Author: Micaela Ventura Morales; School of Humanities, Sciences & Business; Hispanic Studies; School of Education & Graduate Studies; Child & Family Studies

Organization/Business: Just Say Something

Just Say Something was founded by Carol Reeves in 1984. The program was established to provide services to parents and youth throughout the upstate to fulfill a vision of creating a healthy community where all are empowered to reach their full potential.

MICAELA VENTURA MORALES

My name is Micaela Ventura. I was born in Zacualpa Quiché Guatemala. I moved to the United States when I was 4 years old. I grew up in Greenville SC. I am a senior at Converse, double majoring in Child/family studies and Hispanic studies.



INTERNSHIPS

Author: Jimmie Sanders; School of Education & Graduate Studies; Child and Family Studies

Organization/Business: Spartanburg Day School

At Spartanburg Day School, I worked with children who come from various walks of life, with the majority being well off (financially). The experience with working with privileged kids was eye opening and informative. At my internship I organized camps, weekly, surrounding a particular theme. I chaperoned and led field trips each week as well to exemplify the things we learned in the classroom.

JIMMIE SANDERS

Jimmie is on the Valkyries Basketball team. He is also President of the Black Student Union, and serves as Athletic Social Media Chair. He is majoring in Child and Family Studies and is slated to graduate in 2022. He is from Dallas, Texas.



FACULTY/STAFF MENTORS



DR. BILAL CELIK
Assistant Professor of Economics

Department of Economics, Accounting and Business

Research Interest: Public economics, political economy, and economics of natural disasters

Student(s) Mentored: Valentina Aparicio



DR. ANGELA ESCO ELDER
Associate Professor of History

Department of History and Politics

Research Interest: American History

Student(s) Mentored: Sierra R. Feser and Edith M. Hutcheson



DR. NEVAL ERTÜRK
Professor of Biology; Associate Provost for Research and Engagement

Department of Biology, Chemistry, and Physics

Office of Research and Engagement

Research Interest: Drug Metabolism and Toxicology

Student(s) Mentored: Meagan B. Waters, Haley M. Nitz, Savannah B. Grigg, and Anna Joe Powell



DR. LEE GIVINS, JR.
Assistant Professor of Education

Director of the Professional Leadership Program

Associate Dean of Graduate Studies

Education and Graduate Studies

Research Interest: Professional Leadership

Student(s) Mentored: Melissa Kate W. Colwell, Leiloni N. Smith, and Dorothy L. Williams

FACULTY/STAFF MENTORS



DR. MEIRAV GOLDHOUR

Carrie Cathcart Owings '33 Professor of Interior Design

Department of Art and Design

Research Interest: Design for Mental Health

Students Mentored: Caylee N. Taylor, Jordan F. Onufer, Allyson K. Fisher, and Deja N. Quiller



DR. JENNIFER HAWK

Associate Professor of Chemistry

Department of Biology, Chemistry, and Physics

Research Interest: Supramolecular polymers

Student(s) Mentored: Paige N. Smith



DR. DOUGLAS JENSEN

Associate Professor of Biology and Chair

Department of Biology, Chemistry & Physics

Research Interest: Evolutionary biology and plant evolution

Student(s) Mentored: Samantha Jaccard and Madelyn West.



DR. RICHARD KEEN

Professor of Psychology

Department of Psychology

Research Interest: Animal Behavior

Student(s) Mentored: Meagan B. Waters, Haley M. Nitz, Savannah B. Grigg, and Anna Joe Powell

FACULTY/STAFF MENTORS



DR. AMANDA MANGUM

Assistant Professor of Mathematics and Data Science

Department of Mathematics and Data Science

Research Interest: Self organizing maps for data clustering

Student(s) Mentored: Danielle C. Griffin



DR. JEFFERY MARTIN

Assistant Professor in the Professional Leadership

Department of Education and Graduate Studies

Research Interest: Professional Leadership

Student(s) Mentored: Catharine B. Cassell, Peter F. de KAM, Dotan I. Shvorin, and Sherrie L. Jeffries



DR. EDNA STEELE

Professor of Biology

Department of Biology, Chemistry, and Physics

Research Interest: Oxidative stress

Students Mentored: Heena J. Patel, Kaitlin P. Brown, and Mary O. Davidson



DR. SHERI STRICKLAND

Professor of Chemistry

Department of Biology, Chemistry, and Physics

Research Interest: Development of Stimuli-Responsive Programmable Polymers

Student(s) Mentored: Alyssa Hall, Cassidy Cox, and Terra C. Pettit-Bacovin

FACULTY/STAFF MENTORS



DR. JOHN M. THEILMANN

Andrew Helmus Distinguished Professor of History and Politics

Department of History and Politics

Research Interest: History of Medicine and Public Health

Student(s) Mentored: Hannah C. Norton



DR. JENA THOMAS

Associate Professor of Art

Department of Art and Design

Research Interest: Abstract landscape paintings exploring the contemporary context of how mankind alters and views the natural world

Student(s) Mentored: Catherine Ceva



DR. CHRIS VARNON

Assistant Professor of Psychology

Department of Psychology

Research Interest: Biological mechanisms of behavior

Student(s) Mentored: Rebecca R. Avakian, Hayley F. Disco, and Katie M. Edge

SPECIAL ACKNOWLEDGEMENTS

RISE SYMPOSIUM SPONSORS

The RISE Symposium, which celebrates scholarly and creative opportunities for Converse students, has been made possible by the contributions and funding by the university programs below. We are deeply appreciative for their support!

- 2020 Creativity, Community, and Cultural Enrichment Grant*
- Campus Technology
- Nisbet Honors Program
- Office of Communication
- Office of Research and Engagement
- Office of the President

The 2020 Creativity, Community, and Cultural Enrichment Grant Team, consisting of a primary investigator (PI) and co-investigators (Co-PI), includes:

- PI: Neval Ertürk, Professor of Biology and Associate Provost of Research and Engagement - PI
- Co-PI: Laura Brown, Associate Professor of English and Co-Director of Nisbet Honors Program
- Co-PI: Will Case, Associate Professor of Chemistry, Co-Director of Nisbet Honors Program, and Associate Provost for Student Success
- Co-PI: Zach Corbitt, Chief Information Officer
- Co-PI: Holly Duncan, Director of the Office of Communications
- Co-PI: Cathy Gowen, Director of the Office of Career Development

CONVERSE COMMUNITY

The Office of Research and Engagement and the Program Committee extends a special thanks to trustees, President Boone Hopkins, Interim Provost Lienne Medford, Academic Deans Chris Vaneman and Erin Templeton, and the members of the faculty and staff who made the RISE Symposium possible.

JUDGES

Photo Contest:

- Andrew Blanchard, Associate Professor of Studio Art (Chair)
- Leah Anderson, Associate Director of Advancement Marketing
- Jessica Backman, Director of Student Activities and Engagement
- Doug Bush, Associate Professor of Hispanic Studies
- Kristin Lacey, Vice President for Operations and Strategic Planning

Natural and Mathematical Sciences

- Jessica Sorrells, Associate Professor of Mathematics (Chair)
- Joe Barrera, Assistant Professor of Mathematics
- Maddy Behravan, Assistant Professor of Physics

Social Sciences

- Marie LePage, Associate Professor of Psychology (Chair)
- Tanya Greenlee, Assistant Professor of Accounting
- Doug Jensen, Associate Professor of Biology

Arts and Humanities

- Laura Zeisler, Assistant Professor of Art Therapy (Chair)
- Mirko Hall, Professor of German Studies
- Susanne Gunter, Associate Professor of Art Education

Graduate Education

- Margaret Lee, Assistant Professor of Education (Chair)
- Kelly Harrison-Maguire, Associate Professor of Education
- Keisha Gilliam, Assistant Professor of Education

SPECIAL ACKNOWLEDGEMENTS

AWARD WINNERS



Excellence in Photography: Terra Pettit-Bacovin

Converse's bronze sculpture of Maria Mitchell, a famous American scientist of the 19th century, by renowned sculptor Elliot Offner.



Arts and Humanities: Cathy Ceva

Syngnathidae Life Awareness

Advisor: Jena Thomas



Education - Graduate: Dorothy Williams

Impact of Hospital Size and CEO Gender on Patient Satisfaction at Acute Care Hospitals

Advisor: Dr. Lee Givens



Natural and Mathematical Sciences: D. Chloe Griffin

Mechanistic Modeling of COVID-19 Data with Regional Applications

Advisor: Dr. Mandy Mangum



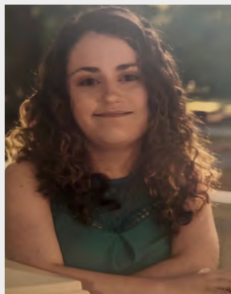
Social Sciences: Rebecca Avakian

The Effect of Alcohol on Startle Response in Orange Head Cockroaches

Advisor: Dr. Chris Varnon

SPECIAL ACKNOWLEDGEMENTS

AWARD WINNERS



Internship - Industry: Allyson Fisher

Industry Partner: Robert T Foster Design Studio



Internship - Non-Profit: Kelsey Elliott

Internship Partner: First Baptist North Spartanburg

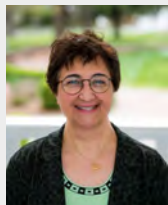


Students' Choice: Paige Smith

The Removal of Cobalt (II) Aqueous Ions via Hydrogel Formation of Sodium Alginate in Synthetic Waters of Varying Harnesses

SPECIAL ACKNOWLEDGEMENTS

PROGRAM COMMITTEE



Neval Ertürk - *RISE Symposium Chair*

Associate Provost for Research and Engagement; Professor of Biology
Office of Research and Engagement



Cathy Gowan - *RISE Symposium Co-Chair*

Director of the Office of Career Development
Office of Student Development and Success



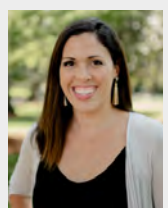
Kristin Lacey - *RISE Symposium Co-Chair*

Vice President for Operations and Strategic Planning
Office of Operations and Strategic Planning



David West - *RISE Symposium Events Coordinator*

Administrative Assistant for Research Administration
Office of Research and Engagement



Leah Anderson - *Proceedings of RISE Symposium Editorial Layout and Design*

Associate Director of Advancement Marketing
Office of Communication



Michelle Bowen - *RISE Symposium Marketing Support*

Associate Director of Marketing
Office of Communication



Chris Vaneman - *RISE Symposium Awards Ceremony Emcee*

Dean of the School of the Arts; Associate Professor of Flute
School of the Arts

ABOUT CONVERSE



Converse University empowers students to become transformative leaders who see clearly, decide wisely, and act justly.

Converse was founded in 1889 by citizens of Spartanburg, SC, who aimed to create an educational experience for women, and in fall 2020 it welcomed its first undergraduate co-educational incoming class. The University encompasses the School of Humanities, Sciences, and Business; the School of the Arts; the School of Education and Graduate Studies; and the Converse College for Women.

Converse students experience deep scholarship, transformative mentorship, experiential learning, and wonderful support for and belief in each other. Through this unique formula, Converse is a creator of opportunity for its students through a personalized education that also includes the professional and technical skills graduates need to be successful in their careers.

Discover more! converse.edu